

Parvalbumin Rabbit mAb

货号: **AYM30548**

产品信息

反应	Human
宿主	Rabbit
克隆性	Monoclonal
预测反应	
应用	WB IHC IP
推荐浓度	WB: 1:500 - 1:2000 IHC: 1:50 - 1:200 IP: 1:20 - 1:50
理论分子量	12kDa
实测分子量	12kDa
形式	Liquid
保存条件	Store at -20°C. Avoid freeze / thaw cycles. Buffer: PBS with 0.75% BSA,50% glycerol,pH7.3.
偶联物	Unconjugated
阳性对照	Mouse skeletal muscle,Rat skeletal muscle
细胞定位	axon,cytoplasm,nucleus,synapse
纯化	Affinity purification

抗原信息

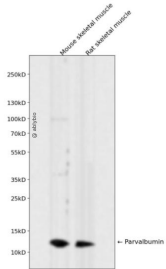
抗原信息	Recombinant fusion protein corresponding to Human Parvalbumin.
序列	MSMTDLLNAEDIKAVGAFSATDSFDHKKFFQMVGLKKKSADDVKKVFHMLDKDKSGFIEEDELGFILKGFSPDARDLSA KETKMLMAAGDKDGDGKIGVDEFSTLVAES

靶点信息

研究背景	The protein encoded by this gene is a high affinity calcium ion-binding protein that is structurally and functionally similar to calmodulin and troponin C. The encoded protein is thought to be involved in muscle relaxation. Alternative splicing results in multiple transcript variants.
基因ID	5816

基因名	PVALB
Swiss	P20472
别名	D22S749;Parvalbumin;PVALB;parvalbumin

产品验证



Western blot analysis of Parvalbumin expressed in Mouse skeletal muscle,Rat skeletal muscle using Parvalbumin Rabbit mAb at 1:1000. Secondary antibody: HRP Goat Anti-Rabbit IgG (H+L) at 1:5000. Lysates/proteins: 30ug per lane. Blocking buffer: 5% non-fat dry milk in TBST. Detection: ECL Enhanced Kit. Exposure time: 120s.

实验步骤

访问官网浏览详情: www.ablybio.cn