

# Villin-1 Rabbit mAb

货号: **AYM30544**

## 产品信息

反应	Human
宿主	Rabbit
克隆性	Monoclonal
预测反应	
应用	WB IHC IP
推荐浓度	<b>WB:</b> 1:500 - 1:2000 <b>IHC:</b> 1:50 - 1:200 <b>IP:</b> 1:20 - 1:50
理论分子量	46kDa/92kDa
实测分子量	93kDa
形式	Liquid
保存条件	Store at -20°C. Avoid freeze / thaw cycles. Buffer: PBS with 0.75% BSA,50% glycerol,pH7.3.
偶联物	Unconjugated
阳性对照	HT-29,HepG2,Mouse kidney,Mouse small intestine
细胞定位	Cell projection,Cytoplasm,cytoskeleton,filopodium,filopodium tip,lamellipodium,microvillus,ruffle
纯化	Affinity purification

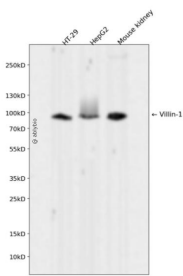
## 抗原信息

抗原信息	Recombinant fusion protein corresponding to Human Villin-1 .
序列	MTKLSAQVKGSLNITTPGLQIWRIEAMQMVPVPSSTFGSFFDGDICYIILAIHKTASSLSYDIHYWIGQDSSLDEQGAAAIYT TQMDDFLKGRAVQHREVGNESEAFRGYFKQGLVIRKGGVASGMKHVETNSYDVQRLLHVKGKRNVVAGEVEMSWKS FNRGDVFLDLGKLIQWNGPESTRMERLRGMTLAKEIRDQERGGRTYVGVDGENELASPKLMEVMNHVLGKRRELKAA VPDTPVEPALKAAALKLYHVSDSEGNLVVREVATRPLTQDLLSHEDCYILDQGGKLIYVWKGKKANEQEKKGAMSHALNFIK AKQYPPSTQVEVQNDGAESAVFQQLFQKWTASNRTSGLGKTHTVGSAKVEQVKFDATSMHVKPQVAAQKQMVDDG SGEVQVWRIENLELVPVDSKWLGHFYGGDCYLLLYTYLIGEKQHYLLYVWQGSQASQDEITASAYQAVILDQKYNQEPVQI RVPMGKEPPHLSIFKGRMVVYQGGTSRTNLETGPSTRLFQVQGTGANNTKAFEVPARANFLNSNDVFLKTQSCCYL WCGKGCSDGEREMAKMVADTISRTEKQVVVEGQEPANFWMALGGKAPYANTKRLQEENLVITPRLFECSNKTGRFLATEI PDFNQDDLEEDDVFLLDVWDQVFFWIGKHANEEKAAAATTAQEYLKTHPSGRDPETPIIVVKQGHEPPTFTGWFLAWD PFKWSNNTKSYEDLKAELGNSRDWSQITAEVTSKVDVFNANSNLSSGPLPIFPLEQLVKNKPEELPEGVDPSRKEEHSIED FTQAFGMTPAAFSALPRWKQNLKKEGLF

## 靶点信息

研究背景	This gene encodes a member of a family of calcium-regulated actin-binding proteins. This protein represents a dominant part of the brush border cytoskeleton which functions in the capping, severing, and bundling of actin filaments. Two mRNAs of 2.7 kb and 3.5 kb have been observed; they result from utilization of alternate poly-adenylation signals present in the terminal exon.
基因ID	7429
基因名	VIL1
Swiss	P09327
别名	VIL1;D2S1471;VIL;villin-1

## 产品验证



Western blot analysis of Villin-1 expressed in HT-29, HepG2, Mouse kidney using Villin-1 Rabbit mAb at 1:1000. Secondary antibody: HRP Goat Anti-Rabbit IgG (H+L) at 1:5000. Lysates/proteins: 30ug per lane. Blocking buffer: 5% non-fat dry milk in TBST. Detection: ECL Enhanced Kit. Exposure time: 120s.

## 实验步骤

访问官网浏览详情: [www.ablybio.cn](http://www.ablybio.cn)