

SDHA Rabbit mAb

货号: **AYM30540**

产品信息

反应	Human,Mouse,Rat
宿主	Rabbit
克隆性	Monoclonal
预测反应	
应用	WB IHC IF/ICC IP FC
推荐浓度	WB: 1:500 - 1:2000 IHC: 1:50 - 1:200 IF/ICC: 1:50 - 1:200 IP: 1:20 - 1:50 FC: 1:20 - 1:50
理论分子量	56kDa/67kDa/72kDa
实测分子量	72kDa
形式	Liquid
保存条件	Store at -20°C. Avoid freeze / thaw cycles. Buffer: PBS with 0.75% BSA,50% glycerol,pH7.3.
偶联物	Unconjugated
阳性对照	HeLa,HepG2,MCF7,Mouse liver,Mouse brain,Mouse heart,Rat brain,Rat heart
细胞定位	Matrix side,Mitochondrion inner membrane,Peripheral membrane protein
纯化	Affinity purification

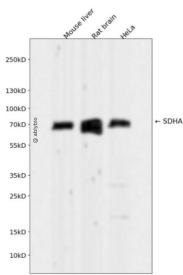
抗原信息

抗原信息	Recombinant fusion protein corresponding to Human SDHA.
序列	ETAMIFAGVDVTKEPIVLPVHYNMGGIPTNYKGQVLRHVNGQDQIVPGLYACGEAACASVHGANRLGANSLLDLVVFGRACALSIEESCRPGDKVPPKPNAGEESVMNLDKLRFDAGSIRTSELRLSMQKSMQNHAAVFRVGSVLQEGCGKISKLYGLDKHLKTFDRGMVWNTDLVETLELQNLMLCALQTIYGAEARKESRGAHAREDYKVRIDEYDYSKPIQGQKPKPFEEHWRKHTLSYVDVGTGKVTLEYRPVIDKTLNEADCATVPPAIRSY

靶点信息

研究背景	This gene encodes a major catalytic subunit of succinate-ubiquinone oxidoreductase, a complex of the mitochondrial respiratory chain. The complex is composed of four nuclear-encoded subunits and is localized in the mitochondrial inner membrane. Mutations in this gene have been associated with a form of mitochondrial respiratory chain deficiency known as Leigh Syndrome. A pseudogene has been identified on chromosome 3q29. Alternatively spliced transcript variants encoding different isoforms have been found for this gene.
基因ID	6389
基因名	SDHA
Swiss	P31040
别名	SDHA;CMD1GG;FP;PGL5;SDH1;SDH2;SDHF

产品验证



Western blot analysis of SDHA expressed in Mouse liver, Rat brain, HeLa using SDHA Rabbit mAb at 1:1000. Secondary antibody: HRP Goat Anti-Rabbit IgG (H+L) at 1:5000. Lysates/proteins: 30ug per lane. Blocking buffer: 5% non-fat dry milk in TBST. Detection: ECL Enhanced Kit. Exposure time: 120s.

实验步骤

访问官网浏览详情: www.ablybio.cn