

Endothelin B Receptor Rabbit mAb

货号: **AYM30529**

产品信息

反应	Human
宿主	Rabbit
克隆性	Monoclonal
预测反应	
应用	WB IP
推荐浓度	WB: 1:500 - 1:2000 IP: 1:20 - 1:50
理论分子量	48kDa/49kDa/59kDa
实测分子量	50kDa
形式	Liquid
保存条件	Store at -20°C. Avoid freeze / thaw cycles. Buffer: PBS with 0.75% BSA,50% glycerol,pH7.3.
偶联物	Unconjugated
阳性对照	B cells,Mouse lung,Mouse brain
细胞定位	Cell membrane,Multi-pass membrane protein
纯化	Affinity purification

抗原信息

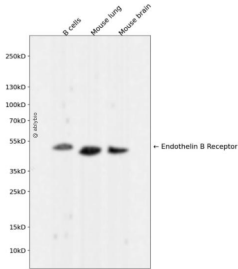
抗原信息	Recombinant fusion protein corresponding to Human Endothelin B Receptor.
序列	MQPPPSLCGRALVALVLACGLSRIWGEERGFPDRATPLLQTAEIMTPPTKTLWPKGSNASLARS LAPAEVPGKDRTAGSP PRTISPPPCQPIEIKETF

靶点信息

研究背景	The protein encoded by this gene is a G protein-coupled receptor which activates a phosphatidylinositol-calcium second messenger system. Its ligand, endothelin, consists of a family of three potent vasoactive peptides: ET1, ET2, and ET3. Studies suggest that the multigenic disorder, Hirschsprung disease type 2, is due to mutations in the endothelin receptor type B gene. Alternative splicing and the use of alternative promoters results in multiple transcript variants.
基因ID	1910

基因名	EDNRB
Swiss	P24530
别名	EDNRB;ABCDS;ET-B;ET-BR;ETB;ETB1;ETBR;ETRB;HSCR;HSCR2;WS4A

产品验证



Western blot analysis of Endothelin B Receptor expressed in B cells, Mouse lung, Mouse brain using Endothelin B Receptor Rabbit mAb at 1:1000. Secondary antibody: HRP Goat Anti-Rabbit IgG (H+L) at 1:5000. Lysates/proteins: 30ug per lane. Blocking buffer: 5% non-fat dry milk in TBST. Detection: ECL Enhanced Kit. Exposure time: 120s.

实验步骤

访问官网浏览详情: www.ablybio.cn