

— ABLYBIO, Help Your Research



PCAF Rabbit mAb

货号: **AYM30519**

产品信息

反应	Human,Mouse,Rat
宿主	Rabbit
克隆性	Monoclonal
预测反应	
应用	WB IP FC
推荐浓度	WB: 1:500 - 1:2000 IP: 1:20 - 1:50 FC: 1:20 - 1:50
理论分子量	93kDa
实测分子量	93kDa
形式	Liquid
保存条件	Store at -20°C. Avoid freeze / thaw cycles. Buffer: PBS with 0.75% BSA,50% glycerol,pH7.3.
偶联物	Unconjugated
阳性对照	Mouse heart,Mouse brain,Rat heart
细胞定位	Nucleus
纯化	Affinity purification

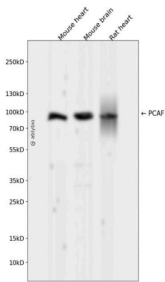
抗原信息

抗原信息	Recombinant fusion protein corresponding to Human PCAF.
------	---

靶点信息

研究背景	CBP and p300 are large nuclear proteins that bind to many sequence-specific factors involved in cell growth and/or differentiation, including c-jun and the adenoviral oncoprotein E1A. The protein encoded by this gene associates with p300/CBP. It has in vitro and in vivo binding activity with CBP and p300, and competes with E1A for binding sites in p300/CBP. It has histone acetyl transferase activity with core histones and nucleosome core particles, indicating that this protein plays a direct role in transcriptional regulation.
基因ID	8850
基因名	KAT2B
Swiss	Q92831
别名	PCAF,PCAF Rabbit mAb,KAT2B,Histone acetyltransferase PCAF,Lysine acetyltransferase 2B,P300/CBP-associated factor,Spermidine acetyltransferase KAT2B

产品验证



Western blot analysis of PCAF expressed in Mouse heart, Mouse brain, Rat heart using PCAF Rabbit mAb at 1:1000. Secondary antibody: HRP Goat Anti-Rabbit IgG (H+L) at 1:5000. Lysates/proteins: 30ug per lane. Blocking buffer: 5% non-fat dry milk in TBST. Detection: ECL Enhanced Kit. Exposure time: 120s.

实验步骤

访问官网浏览详情: www.ablybio.cn (<https://www.ablybio.cn/>www.ablybio.cn)