

NDUFB8 Rabbit mAb

货号: **AYM30516**

产品信息

反应	Human,Mouse,Rat
宿主	Rabbit
克隆性	Monoclonal
预测反应	
应用	WB IHC IF/ICC IP FC
推荐浓度	WB: 1:500 - 1:2000 IHC: 1:50 - 1:200 IF/ICC: 1:50 - 1:200 IP: 1:20 - 1:50 FC: 1:20 - 1:50
理论分子量	19kDa
实测分子量	19kDa
形式	Liquid
保存条件	Store at -20°C. Avoid freeze / thaw cycles. Buffer: PBS with 0.75% BSA,50% glycerol,pH7.3.
偶联物	Unconjugated
阳性对照	HeLa,HepG2,RAW264,7,THP-1,C6,Mouse kidney,Mouse heart,Rat kidney,Rat heart
细胞定位	endoplasmic reticulum,mitochondrial inner membrane,mitochondrial matrix,mitochondrial respiratory chain complex I,mitochondrion
纯化	Affinity purification

抗原信息

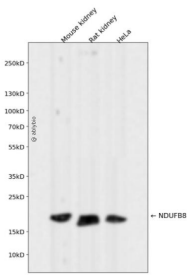
抗原信息	Recombinant fusion protein corresponding to Human NDUFB8.
序列	MAVARAGVLGVQWLQRASRNVMPLGARTASHMTKDMFPGYPRTPEERAAAAKKYNMRVEDYEPYPDDGMGYGDYPKLPDRSQHERDPWYSWDQPLRLNWGEPMHWHLDMYNRNRVDTSPVSWHVMCMQLFGFLAFMIFMCWVGDVY

靶点信息

研究背景	Accessory subunit of the mitochondrial membrane respiratory chain NADH dehydrogenase (Complex I, th at is believed not to be involved in catalysis. Complex I functions in the transfer of electrons from NADH t o the respiratory chain. The immediate electron acceptor for the enzyme is believed to be ubiquinone.
------	------------------------------------------------------------------------------------------------------------------------------------------------------------------------------------------------------------------------------------------------------------------------------------------------------------------------

基因ID	4714
基因名	NDUFB8
Swiss	O95169
别名	ASHI; CI-ASHI

产品验证



Western blot analysis of NDUFB8 expressed in Mouse kidney, Rat kidney, HeLa using NDUFB8 Rabbit mAb at 1:1000. Secondary antibody: HRP Goat Anti-Rabbit IgG (H+L) at 1:5000. Lysates/proteins: 30ug per lane. Blocking buffer: 5% non-fat dry milk in TBST. Detection: ECL Enhanced Kit. Exposure time: 120s.

实验步骤

访问官网浏览详情: www.ablybio.cn