

Citrate synthetase Rabbit mAb

货号: **AYM30513**

产品信息

反应	Human,Mouse,Rat
宿主	Rabbit
克隆性	Monoclonal
预测反应	
应用	WB IHC IF/ICC FC
推荐浓度	WB: 1:500 - 1:2000 IHC: 1:50 - 1:200 IF/ICC: 1:50 - 1:200 FC: 1:20 - 1:50
理论分子量	51kDa
实测分子量	45kDa
形式	Liquid
保存条件	Store at -20°C. Avoid freeze / thaw cycles. Buffer: PBS with 0.75% BSA,50% glycerol,pH7.3.
偶联物	Unconjugated
阳性对照	HeLa,SW620,293T,Mouse heart,Rat heart
细胞定位	Mitochondrion matrix
纯化	Affinity purification

抗原信息

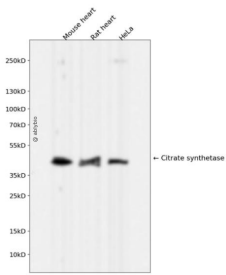
抗原信息	Recombinant fusion protein corresponding to Human Citrate synthetase.
序列	ASSTNLKDILADLIPKEQARIKTRFQQHGGKTVVGGQITVDDMMYGGMRGMKGLVYETSVLDPDEGIRFRGFSIPECQKLLPKA KGGEEPLPEGLFWLLVTGHIPTTEEQVSWLSKEWAKRAALPSHVVTMLDNFPTNLHPMSQLSAAVTALNSESNFARAYAQG ISRKYWELIYEDSMDLIAKLPCVAAKIYRNLY

靶点信息

研究背景	The protein encoded by this gene is a Krebs tricarboxylic acid cycle enzyme that catalyzes the synthesis of citrate from oxaloacetate and acetyl coenzyme A. The enzyme is found in nearly all cells capable of oxidative metabolism. This protein is nuclear encoded and transported into the mitochondrial matrix, where the mature form is found.
------	--

基因ID	1431
基因名	CS
Swiss	O75390
别名	CS

产品验证



Western blot analysis of Citrate synthetase expressed in Mouse heart, Rat heart, HeLa using Citrate synthetase Rabbit mAb at 1:1000. Secondary antibody: HRP Goat Anti-Rabbit IgG (H+L) at 1:5000. Lysates/proteins: 30ug per lane. Blocking buffer: 5% non-fat dry milk in TBST. Detection: ECL Enhanced Kit. Exposure time: 120s.

实验步骤

访问官网浏览详情: www.ablybio.cn