

PDHA1 Rabbit mAb

货号: **AYM30510**

产品信息

反应	Human,Mouse,Rat
宿主	Rabbit
克隆性	Monoclonal
预测反应	
应用	WB IHC IF/ICC IP FC
推荐浓度	WB: 1:500 - 1:2000 IHC: 1:50 - 1:200 IF/ICC: 1:50 - 1:200 IP: 1:20 - 1:50 FC: 1:20 - 1:50
理论分子量	40kDa/43kDa/44kDa/47kDa
实测分子量	43kDa
形式	Liquid
保存条件	Store at -20°C. Avoid freeze / thaw cycles. Buffer: PBS with 0.75% BSA,50% glycerol,pH7.3.
偶联物	Unconjugated
阳性对照	HepG2,293T,HeLa,NIH/3T3,Neuro-2a,PC-12
细胞定位	Mitochondrion matrix
纯化	Affinity purification

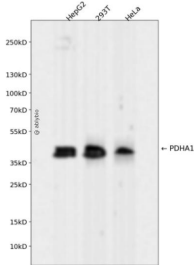
抗原信息

抗原信息	Recombinant fusion protein corresponding to Human PDHA1.
序列	FANDATFEIKKCDLHRLEEGPPVTTVLTREDGLKYRMMQTVRRMELKADQLYKQKIIRGFCHLCDGQEACCVGLEAGINP TDHLITAYRAHGFTFTRGLSVREILAELTGRKGGCAKGGKSSMHMYAKNFYGGNGIVGAQVPLGAGIALACKYNGKDEVC LTLYGDGAANQGQIFEAYNMAALWKLPCIFICENNRYMGTSVERAAASTDYKRGDFIPGLRVDGMDILCVREATRFAAA YCRSGKGPILMELQTYRYHGHMSDPGVSYRTREEIQEVRSKSDPIMLLKDRMVNSNLASVEELKEIDVEVRKEIEDAAQFA TADPEPPLEELGYHIYSSDPPFEVRGANQWIKFKSVS

靶点信息

研究背景	The pyruvate dehydrogenase (PDH) complex is a nuclear-encoded mitochondrial multienzyme complex that catalyzes the overall conversion of pyruvate to acetyl-CoA and CO ₂ , and provides the primary link between glycolysis and the tricarboxylic acid (TCA) cycle. The PDH complex is composed of multiple copies of three enzymatic components: pyruvate dehydrogenase (E1), dihydrolipoamide acetyltransferase (E2) and lipoamide dehydrogenase (E3). The E1 enzyme is a heterotetramer of two alpha and two beta subunits. This gene encodes the E1 alpha 1 subunit containing the E1 active site, and plays a key role in the function of the PDH complex. Mutations in this gene are associated with pyruvate dehydrogenase E1-alpha deficiency and X-linked Leigh syndrome. Alternatively spliced transcript variants encoding different isoforms have been found for this gene.
基因ID	5160
基因名	PDHA1
Swiss	P08559
别名	PDHA1;PDHA;PDHAD;PDHCE1A;PHE1A

产品验证



Western blot analysis of PDHA1 expressed in HepG2,293T,HeLa using PDHA1 Rabbit mAb at 1:1000. Secondary antibody: HRP Goat Anti-Rabbit IgG (H+L) at 1:5000. Lysates/proteins: 30ug per lane. Blocking buffer: 5% non-fat dry milk in TBST. Detection: ECL Enhanced Kit. Exposure time: 120s.

实验步骤

访问官网浏览详情: www.ablybio.cn