

Leptin Receptor Rabbit mAb

货号: **AYM30504**

产品信息

反应	Human,Mouse,Rat
宿主	Rabbit
克隆性	Monoclonal
预测反应	
应用	WB
推荐浓度	WB: 1:500 - 1:2000
理论分子量	96kDa/102kDa/103kDa/109kDa/132kDa
实测分子量	150kDa
形式	Liquid
保存条件	Store at -20°C. Avoid freeze / thaw cycles. Buffer: PBS with 0.75% BSA,50% glycerol,pH7.3.
偶联物	Unconjugated
阳性对照	HepG2,Mouse heart,Mouse lung,Rat liver
细胞定位	Cell membrane,Secreted,Single-pass type I membrane protein
纯化	Affinity purification

抗原信息

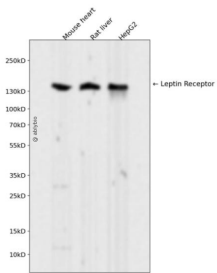
抗原信息	Recombinant fusion protein corresponding to Human Leptin Receptor.
序列	EEQGLINSSVTKCFSSKNSPLKDSFSNSSWEIEAQAFFILSDQHPNIISPHLTFSEGLDELLKLEGNFPEENNDKKSIIYLGVT SIKKRESGVLLTDKSRV

靶点信息

研究背景	The protein encoded by this gene belongs to the gp130 family of cytokine receptors that are known to stimulate gene transcription via activation of cytosolic STAT proteins. This protein is a receptor for leptin (an adipocyte-specific hormone that regulates body weight), and is involved in the regulation of fat metabolism, as well as in a novel hematopoietic pathway that is required for normal lymphopoiesis. Mutations in this gene have been associated with obesity and pituitary dysfunction. Alternatively spliced transcript variants encoding different isoforms have been described for this gene. It is noteworthy that this gene and LEPROT gene (GeneID:54741) share the same promoter and the first 2 exons, however, encode distinct proteins (PMID:9207021).[provided by RefSeq, Nov 2010]
------	---

基因ID	3953
基因名	LEPR
Swiss	P48357
别名	CD295;LEP-R;LEPRD;OB-R;OBR;LEPR

产品验证



Western blot analysis of Leptin Receptor expressed in Mouse heart, Rat liver, HepG2 using Leptin Receptor Rabbit mAb at 1:1000. Secondary antibody: HRP Goat Anti-Rabbit IgG (H+L) at 1:5000. Lysate s/proteins: 30ug per lane. Blocking buffer: 5% non-fat dry milk in TBST. Detection: ECL Enhanced Kit. Exposure time: 120s.

实验步骤

访问官网浏览详情: www.ablybio.cn