

Hes1 Rabbit mAb

货号: **AYM30503**

产品信息

| | |
|-------|--|
| 反应 | Human,Mouse,Rat |
| 宿主 | Rabbit |
| 克隆性 | Monoclonal |
| 预测反应 | |
| 应用 | WB IHC IF/ICC FC |
| 推荐浓度 | WB: 1:500 - 1:2000 IHC: 1:50 - 1:200 IF/ICC: 1:50 - 1:200 FC: 1:20 - 1:50 |
| 理论分子量 | 29kDa |
| 实测分子量 | 30kDa |
| 形式 | Liquid |
| 保存条件 | Store at -20°C. Avoid freeze / thaw cycles. Buffer: PBS with 0.75% BSA,50% glycerol,pH7.3. |
| 偶联物 | Unconjugated |
| 阳性对照 | MCF7,SKOV3 |
| 细胞定位 | Nucleus |
| 纯化 | Affinity purification |

抗原信息

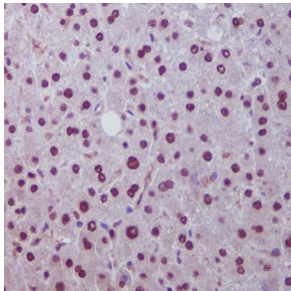
| | |
|------|--|
| 抗原信息 | Recombinant fusion protein corresponding to Human Hes1. |
| 序列 | FAPPPPLVPIPGGAAPPPGGAPCKLGSQAGEAAKVFGGFQVVPAPDGQFAFLIPNGAFAHSGPVIPTYTSNSGTSVGPNAV SPSSGPSLTADSMWRPWRN |

靶点信息

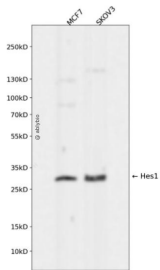
| | |
|------|---|
| 研究背景 | This protein belongs to the basic helix-loop-helix family of transcription factors. It is a transcriptional repressor of genes that require a bHLH protein for their transcription. The protein has a particular type of basic domain that contains a helix interrupting protein that binds to the N-box rather than the canonical E-box. |
|------|---|

| | |
|-------|----------------------------|
| 基因ID | 3280 |
| 基因名 | HES1 |
| Swiss | Q14469 |
| 别名 | HES1;HES-1;HHL;HRY;bHLHb39 |

产品验证



Immunohistochemical analysis of paraffin-embedded human liver, using Hes1 Antibody.



Western blot analysis of Hes1 expressed in MCF7,SKOV3 using Hes1 Rabbit mAb at 1:1000. Secondary antibody: HRP Goat Anti-Rabbit IgG (H+L) at 1:5000. Lysates/proteins: 30ug per lane. Blocking buffer: 5% non-fat dry milk in TBST. Detection: ECL Enhanced Kit. Exposure time: 120s.

实验步骤

访问官网浏览详情: www.ablybio.cn