

STIM1 Rabbit mAb

货号: **AYM30493**

产品信息

反应	Human,Mouse,Rat
宿主	Rabbit
克隆性	Monoclonal
预测反应	
应用	WB IHC IP
推荐浓度	WB: 1:500 - 1:2000 IHC: 1:50 - 1:200 IP: 1:20 - 1:50
理论分子量	77kDa
实测分子量	77kDa
形式	Liquid
保存条件	Store at -20°C. Avoid freeze / thaw cycles. Buffer: PBS with 0.75% BSA,50% glycerol,pH7.3.
偶联物	Unconjugated
阳性对照	HeLa,Jurkat,MCF7
细胞定位	cortical endoplasmic reticulum,endoplasmic reticulum,plasma membrane,plasma membrane raft
纯化	Affinity purification

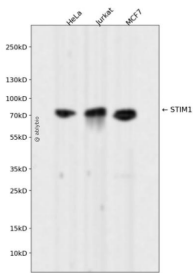
抗原信息

抗原信息	Recombinant fusion protein corresponding to Human STIM1.
序列	RQRVAPKPPQMSRAADEALNAMTNSGSHRLIEGVHPGSLVEKLPDSPALAKKALLALNHGLDKAHSLMELSPSAPPGGSP HLDSSRSHSPSSPDPDTPSPVGDSTRALQASRNTRIPHLAGKKAVAEEDNGSIGEETDSSPGRKKFPLKIFKKPLKK

靶点信息

研究背景	This gene encodes a type 1 transmembrane protein that mediates Ca ²⁺ influx after depletion of intracellular Ca ²⁺ stores by gating of store-operated Ca ²⁺ influx channels (SOCs). It is one of several genes located in the imprinted gene domain of 11p15.5, an important tumor-suppressor gene region. Alterations in this region have been associated with the Beckwith-Wiedemann syndrome, Wilms tumor, rhabdomyosarcoma, adrenocortical carcinoma, and lung, ovarian, and breast cancer. This gene may play a role in malignancies and disease that involve this region, as well as early hematopoiesis, by mediating attachment to stromal cells. Mutations in this gene are associated with fatal classic Kaposi sarcoma, immunodeficiency due to defects in store-operated calcium entry (SOCE) in fibroblasts, ectodermal dysplasia and tubular aggregate myopathy. This gene is oriented in a head-to-tail configuration with the ribonucleotide reductase 1 gene (RRM1), with the 3' end of this gene situated 1.6 kb from the 5' end of the RRM1 gene. Alternative splicing of this gene results in multiple transcript variants. [provided by RefSeq, May 2013]
基因ID	6786
基因名	STIM1
Swiss	Q13586
别名	D11S4896E; GOK; IMD10; STRMK; TAM; TAM1

产品验证



Western blot analysis of STIM1 expressed in HeLa, Jurkat, MCF7 using STIM1 Rabbit mAb at 1:1000. Secondary antibody: HRP Goat Anti-Rabbit IgG (H+L) at 1:5000. Lysates/proteins: 30ug per lane. Blocking buffer: 5% non-fat dry milk in TBST. Detection: ECL Enhanced Kit. Exposure time: 120s.

实验步骤

访问官网浏览详情: www.ablybio.cn