

# SEC24D Rabbit mAb

货号: **AYM30479**

## 产品信息

反应	Human,Mouse,Rat
宿主	Rabbit
克隆性	Monoclonal
预测反应	
应用	WB
推荐浓度	<b>WB:</b> 1:500 - 1:2000
理论分子量	113kDa
实测分子量	113kDa
形式	Liquid
保存条件	Store at -20°C. Avoid freeze / thaw cycles. Buffer: PBS with 0.75% BSA,50% glycerol,pH7.3.
偶联物	Unconjugated
阳性对照	HeLa,NIH/3T3,Rat liver
细胞定位	Cytoplasm,Endoplasmic reticulum membrane,Golgi apparatus membrane,perinuclear region
纯化	Affinity purification

## 抗原信息

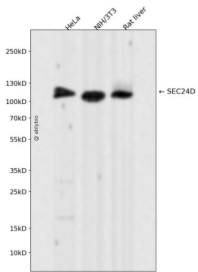
抗原信息	Recombinant fusion protein corresponding to Human SEC24D.
序列	

## 靶点信息

研究背景	The protein encoded by this gene is a member of the SEC24 subfamily of the SEC23/SEC24 family, which is involved in vesicle trafficking. The encoded protein has similarity to yeast Sec24p component of COPII. COPII is the coat protein complex responsible for vesicle budding from the ER. This gene product is implicated in the shaping of the vesicle, and also in cargo selection and concentration. Mutations in this gene have been associated with Cole-Carpenter syndrome, a disorder affecting bone formation, resulting in craniofacial malformations and bones that break easily. Alternative splicing results in multiple transcript variants encoding different isoforms.
基因ID	9871

基因名	SEC24D
Swiss	O94855
别名	SEC24D;CLCRP2

## 产品验证



Western blot analysis of SEC24D expressed in HeLa,NIH/3T3,Rat liver using SEC24D Rabbit mAb at 1:1 000. Secondary antibody: HRP Goat Anti-Rabbit IgG (H+L) at 1:5000. Lysates/proteins: 30ug per lane. Blocking buffer: 5% non-fat dry milk in TBST. Detection: ECL Enhanced Kit. Exposure time: 120s.

## 实验步骤

访问官网浏览详情: [www.ablybio.cn](http://www.ablybio.cn)