

PELP1 Rabbit mAb

货号: **AYM30473**

产品信息

反应	Human
宿主	Rabbit
克隆性	Monoclonal
预测反应	
应用	WB IHC IF/ICC FC
推荐浓度	WB: 1:500 - 1:2000 IHC: 1:50 - 1:200 IF/ICC: 1:50 - 1:200 FC: 1:20 - 1:50
理论分子量	119kDa
实测分子量	120kDa
形式	Liquid
保存条件	Store at -20°C. Avoid freeze / thaw cycles. Buffer: PBS with 0.75% BSA,50% glycerol,pH7.3.
偶联物	Unconjugated
阳性对照	HeLa cells, Jurkat cells, T-47D cells
细胞定位	Cytoplasm,Nucleus,nucleoplasm
纯化	Affinity purification

抗原信息

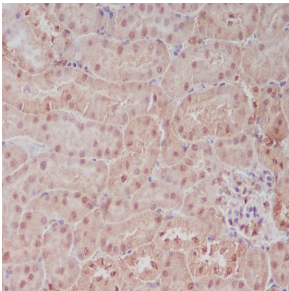
抗原信息	Recombinant fusion protein corresponding to Human PELP1.
序列	

靶点信息

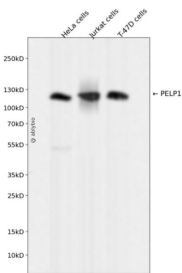
研究背景	This gene encodes a transcription factor which coactivates transcription of estrogen receptor responsive genes and corepresses genes activated by other hormone receptors or sequence-specific transcription factors. Expression of this gene is regulated by both members of the estrogen receptor family. This gene may be involved in the progression of several types of cancer. Alternative splicing results in multiple transcript variants.
------	--

基因ID	27043
基因名	PELP1
Swiss	Q8IZL8
别名	PELP1;MNAR;P160;proline

产品验证



Immunohistochemical analysis of paraffin-embedded mouse kidney, using PELP1 Antibody.



Western blot analysis of PELP1 expressed in HeLa cells, Jurkat cells, T-47D cells using PELP1 Rabbit mAb at 1:1000. Secondary antibody: HRP Goat Anti-Rabbit IgG (H+L) at 1:5000. Lysates/proteins: 30ug per lane. Blocking buffer: 5% non-fat dry milk in TBST. Detection: ECL Enhanced Kit. Exposure time: 120s.

实验步骤

访问官网浏览详情: www.ablybio.cn