

NSE Rabbit mAb

货号: **AYM30456**

产品信息

| | |
|-------|---|
| 反应 | Human,Mouse,Rat |
| 宿主 | Rabbit |
| 克隆性 | Monoclonal |
| 预测反应 | |
| 应用 | WB IHC ICC FC |
| 推荐浓度 | WB: 1:500 - 1:2000 IHC: 1:50 - 1:200 ICC: 1:50 - 1:200 FC: 1:20 - 1:50 |
| 理论分子量 | 42kDa/47kDa |
| 实测分子量 | 47kDa |
| 形式 | Liquid |
| 保存条件 | Store at -20°C. Avoid freeze / thaw cycles. Buffer: PBS with 0.75% BSA,50% glycerol,pH7.3. |
| 偶联物 | Unconjugated |
| 阳性对照 | SH-SY5Y,Mouse brain,Rat brain |
| 细胞定位 | Cell membrane,Cytoplasm |
| 纯化 | Affinity purification |

抗原信息

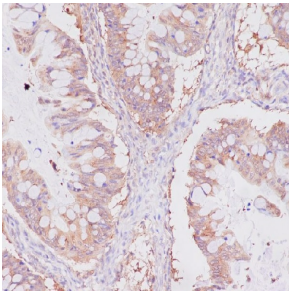
| | |
|------|--|
| 抗原信息 | Recombinant fusion protein corresponding to Human NSE. |
| 序列 | VIKDKYGKDATNVGDEGGFAPNILENSEALELVKEAIDKAGYTEKIVIGMDVAASEFYRDGKYDLDFKSPTDPSRYITGDQL GALYQDFVRDYPVVSIEDPFDQDDWAAWSKFTANVGIQIVGDDLTVTNPKRIERAVEEKACNCLLLKVNQIGSVTEAIQAC KLAQENGWGMVMSHRSGETEDTFIADLVVGLCTGQIKTGAPCRSERLAKYNQLMRIIEELGDEARFAGHNFRNPSVL |

靶点信息

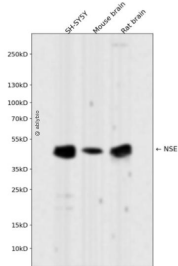
| | |
|------|---|
| 研究背景 | This gene encodes one of the three enolase isoenzymes found in mammals. This isoenzyme, a homodimer, is found in mature neurons and cells of neuronal origin. A switch from alpha enolase to gamma enolase occurs in neural tissue during development in rats and primates. |
|------|---|

| | |
|-------|------------------------------|
| 基因ID | 2026 |
| 基因名 | ENO2 |
| Swiss | P09104 |
| 别名 | ENO2;HEL-S-279;NSE;enolase 2 |

产品验证



Immunohistochemical analysis of paraffin-embedded human uterus cancer, using NSE Antibody



Western blot analysis of NSE expressed in SH-SY5Y, Mouse brain, Rat brain using NSE Rabbit mAb at 1:1000. Secondary antibody: HRP Goat Anti-Rabbit IgG (H+L) at 1:5000. Lysates/proteins: 30ug per lane. Blocking buffer: 5% non-fat dry milk in TBST. Detection: ECL Enhanced Kit. Exposure time: 120s.

实验步骤

访问官网浏览详情: www.ablybio.cn