

IRF6 Rabbit mAb

货号: **AYM30447**

产品信息

反应	Human,Mouse,Rat
宿主	Rabbit
克隆性	Monoclonal
预测反应	
应用	WB IHC IF/ICC
推荐浓度	WB: 1:500 - 1:2000 IHC: 1:50 - 1:200 IF/ICC: 1:50 - 1:200
理论分子量	53kDa
实测分子量	53kDa
形式	Liquid
保存条件	Store at -20°C. Avoid freeze / thaw cycles. Buffer: PBS with 0.75% BSA,50% glycerol,pH7.3.
偶联物	Unconjugated
阳性对照	293T,HepG2,A-549,Mouse lung,Mouse kidney,Rat lung,Rat liver
细胞定位	Cytoplasm,Nucleus
纯化	Affinity purification

抗原信息

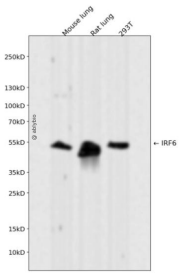
抗原信息	Recombinant fusion protein corresponding to Human IRF6.
序列	PFEIYLCFGEEWPDGKPLERKLILVQVIPVARMYEMFSGDFTRSFDSGSVRLQISTPDIKDNIVAQLKQLYRILQTQESWQ PMQPTPSMQLPPLPPQ

靶点信息

研究背景	This gene encodes a member of the interferon regulatory transcription factor (IRF) family. Family members share a highly-conserved N-terminal helix-turn-helix DNA-binding domain and a less conserved C-terminal protein-binding domain. The encoded protein may be a transcriptional activator. Mutations in this gene can cause van der Woude syndrome and popliteal pterygium syndrome. Mutations in this gene are also associated with non-syndromic orofacial cleft type 6. Alternate splicing results in multiple transcript variants.[provided by RefSeq, May 2011]
------	---

基因ID	3664
基因名	IRF6
Swiss	O14896
别名	LPS; OFC6; PIT; PPS; PPS1; VWS; VWS1

产品验证



Western blot analysis of IRF6 expressed in Mouse lung,Rat lung,293T using IRF6 Rabbit mAb at 1:1000. Secondary antibody: HRP Goat Anti-Rabbit IgG (H+L) at 1:5000. Lysates/proteins: 30ug per lane. Blocking buffer: 5% non-fat dry milk in TBST. Detection: ECL Enhanced Kit. Exposure time: 120s.

实验步骤

访问官网浏览详情: www.ablybio.cn