

beta Tubulin Rabbit mAb

货号: **AYM30443**

产品信息

反应	Human,Mouse,Rat
宿主	Rabbit
克隆性	Monoclonal
预测反应	
应用	WB IHC IP FC
推荐浓度	WB: 1:500 - 1:2000 IHC: 1:50 - 1:200 IF/ICC: 1:50 - 1:200 IP: 1:20 - 1:50 FC: 1:20 - 1:50
理论分子量	
实测分子量	50kDa
形式	Liquid
保存条件	Store at -20°C. Avoid freeze / thaw cycles. Buffer: PBS with 0.75% BSA,50% glycerol,pH7.3.
偶联物	Unconjugated
阳性对照	
细胞定位	
纯化	Affinity purification

抗原信息

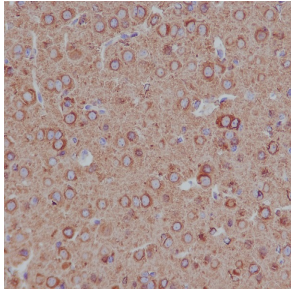
抗原信息	Recombinant fusion protein corresponding to Human beta II Tubulin .
序列	

靶点信息

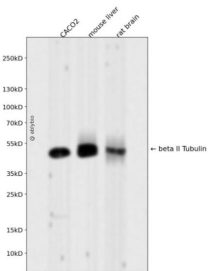
研究背景	
基因ID	
基因名	

Swiss	P68371/Q13885/Q9BVA1
别名	

产品验证



Immunohistochemical analysis of paraffin-embedded mouse brain, using beta II Tubulin Antibody.



Western blot analysis of beta Tubulin expressed in CACO2, mouse liver, rat brain using beta II Tubulin Rabbit mAb at 1:1000. Secondary antibody: HRP Goat Anti-Rabbit IgG (H+L) at 1:5000. Lysates/proteins: 30ug per lane. Blocking buffer: 5% non-fat dry milk in TBST. Detection: ECL Enhanced Kit. Exposure time: 120s.

实验步骤

访问官网浏览详情: www.ablybio.cn