

Glucagon Rabbit mAb

货号: **AYM30435**

产品信息

反应	Human,Mouse,Rat
宿主	Rabbit
克隆性	Monoclonal
预测反应	
应用	WB IHC
推荐浓度	WB: 1:500 - 1:2000 IHC: 1:50 - 1:200
理论分子量	20kDa
实测分子量	21kDa
形式	Liquid
保存条件	Store at -20°C. Avoid freeze / thaw cycles. Buffer: PBS with 0.75% BSA,50% glycerol,pH7.3.
偶联物	Unconjugated
阳性对照	BxPC-3,293T,Rat spleen
细胞定位	Secreted
纯化	Affinity purification

抗原信息

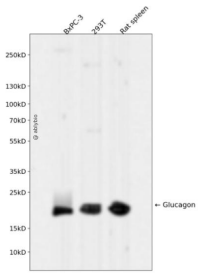
抗原信息	Recombinant fusion protein corresponding to Human Glucagon.
序列	RSLQDTEEKSRSFASQADPLSDPDQMNE DKRHSQGTFTSDYSKYLDSRRAQDFVQWLMNTKRNRN NI AKRHDEFER HAEGTFTSDVSSYLEGQAAKEFI AWLVKGRGRDFPEEVAIVEELGRRHADGFSDEMNTILDNLAARDFINWLIQTKITD RK

靶点信息

研究背景	The protein encoded by this gene is actually a preproprotein that is cleaved into four distinct mature peptide. One of these, glucagon, is a pancreatic hormone that counteracts the glucose-lowering action of insulin by stimulating glycogenolysis and gluconeogenesis. Glucagon is a ligand for a specific G-protein linked receptor whose signalling pathway controls cell proliferation. Two of the other peptides are secreted from gut endocrine cells and promote nutrient absorption through distinct mechanisms. Finally, the fourth peptide is similar to glicentin, an active enteroglucagon.
------	--

基因ID	2641
基因名	GCG
Swiss	P01275
别名	GCG;GLP-1;GLP1;GLP2;GRPP;glucagon

产品验证



Western blot analysis of Glucagon expressed in BxPC-3,293T,Rat spleen using Glucagon Rabbit mAb at 1:1000. Secondary antibody: HRP Goat Anti-Rabbit IgG (H+L) at 1:5000. Lysates/proteins: 30ug per lane. Blocking buffer: 5% non-fat dry milk in TBST. Detection: ECL Enhanced Kit. Exposure time: 120s.

实验步骤

访问官网浏览详情: www.ablybio.cn