

eIF1A Rabbit mAb

货号: **AYM30434**

产品信息

反应	Human
宿主	Rabbit
克隆性	Monoclonal
预测反应	
应用	WB IHC IF/ICC IP
推荐浓度	WB: 1:500 - 1:2000 IHC: 1:50 - 1:200 IF/ICC: 1:50 - 1:200 IP: 1:20 - 1:50
理论分子量	16kDa
实测分子量	18kDa
形式	Liquid
保存条件	Store at -20°C. Avoid freeze / thaw cycles. Buffer: PBS with 0.75% BSA, 50% glycerol, pH7.3.
偶联物	Unconjugated
阳性对照	SKOV3, HT-29, MCF7, NCI-H460, Mouse brain, Mouse kidney
细胞定位	cytoplasm, cytosol, synapse
纯化	Affinity purification

抗原信息

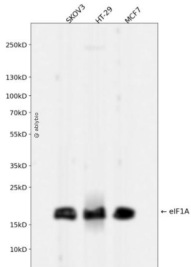
抗原信息	Recombinant fusion protein corresponding to Human eIF1A.
序列	KNRRRGKNESEKRELVFKEDGQEYAQVIKMLGNRLEAMCFDGVKRLCHIRGKLRKKVWINTSDIILVGLRDYQDNKADVILKYNADEARSLKAYGELPEHAKINETDTFGPGDDDEIQFDDIGDDDEDIDDI

靶点信息

研究背景	This gene encodes an essential eukaryotic translation initiation factor. The protein is required for the binding of the 43S complex (a 40S subunit, eIF2/GTP/Met-tRNA _i and eIF3) to the 5' end of capped RNA.
基因ID	1964

基因名	EIF1AX
Swiss	P47813
别名	EIF1AX;EIF1A;EIF1AP1;EIF4C;eIF-1A;eIF-4C;X-linked

产品验证



Western blot analysis of eIF1A expressed in SKOV3,HT-29,MCF7 using eIF1A Rabbit mAb at 1:1000. Secondary antibody: HRP Goat Anti-Rabbit IgG (H+L) at 1:5000. Lysates/proteins: 30ug per lane. Blocking buffer: 5% non-fat dry milk in TBST. Detection: ECL Enhanced Kit. Exposure time: 120s.

实验步骤

访问官网浏览详情: www.ablybio.cn