

Placental alkaline phosphatase (PLAP) Rabbit mAb

货号: **AYM30432**

产品信息

反应	Human
宿主	Rabbit
克隆性	Monoclonal
预测反应	
应用	WB IHC IF/ICC
推荐浓度	WB: 1:500 - 1:2000 IHC: 1:50 - 1:200 IF/ICC: 1:50 - 1:200
理论分子量	57kDa
实测分子量	70kDa
形式	Liquid
保存条件	Store at -20°C. Avoid freeze / thaw cycles. Buffer: PBS with 0.75% BSA, 50% glycerol, pH7.3.
偶联物	Unconjugated
阳性对照	HeLa
细胞定位	Cell membrane, GPI-anchor, Lipid-anchor
纯化	Affinity purification

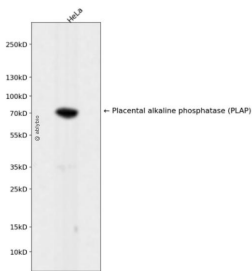
抗原信息

抗原信息	Recombinant fusion protein corresponding to Human Placental alkaline phosphatase (PLAP).
序列	LAKRQGARYVWNRTQLMQASLDPSVTHLMGLFEPGDMKYEIHRDSTLDPQLMEMTEAALRLLSRNPRGFFLFVEGGRIDH GHESRAYRALTETIMFDDAIERAGQLTSEEDTSLVLTADHSHVFSFGGYPLRGSSIFGLAPGKARDRKAYTVLLYGNPG YVLKDGARPDVTESESGSPEYRQQSAPLDEETHAGEDVA

靶点信息

研究背景	The protein encoded by this gene is an alkaline phosphatase, a metalloenzyme that catalyzes the hydrolysis of phosphoric acid monoesters. It belongs to a multigene family composed of four alkaline phosphatase isoenzymes. The enzyme functions as a homodimer and has a catalytic site containing one magnesium and two zinc ions, which are required for its enzymatic function. The protein is primarily expressed in placental and endometrial tissue; however, strong ectopic expression has been detected in ovarian adenocarcinoma, serous cystadenocarcinoma, and other ovarian cancer cells.
基因ID	250
基因名	ALPP
Swiss	P05187
别名	ALPP;ALP;PALP;PLAP;PLAP-1;placental

产品验证



Western blot analysis of Placental alkaline phosphatase (PLAP) expressed in HeLa using Placental alkaline phosphatase (PLAP) Rabbit mAb at 1:1000. Secondary antibody: HRP Goat Anti-Rabbit Ig G (H+L) at 1:5000. Lysates/proteins: 30ug per lane. Blocking buffer: 5% non-fat dry milk in TBST. Detection: ECL Enhanced Kit. Exposure time: 120s.

实验步骤

访问官网浏览详情: www.ablybio.cn