

# EHD1 Rabbit mAb

货号: **AYM30431**

## 产品信息

反应	Human,Mouse,Rat
宿主	Rabbit
克隆性	Monoclonal
预测反应	
应用	WB IHC IF/ICC IP FC
推荐浓度	<b>WB:</b> 1:500 - 1:2000 <b>IHC:</b> 1:50 - 1:200 <b>IF/ICC:</b> 1:50 - 1:200 <b>IP:</b> 1:20 - 1:50 <b>FC:</b> 1:20 - 1:50
理论分子量	61kDa
实测分子量	61kDa
形式	Liquid
保存条件	Store at -20°C. Avoid freeze / thaw cycles. Buffer: PBS with 0.75% BSA,50% glycerol,pH7.3.
偶联物	Unconjugated
阳性对照	HeLa,THP-1,U-251MG,Mouse liver,Mouse brain,Mouse spleen,Rat lung,Rat testis,Rat kidney
细胞定位	Cell membrane,Cell projection,Cytoplasmic side,Early endosome membrane,Peripheral membrane protein,Recycling endosome membrane,cilium membrane
纯化	Affinity purification

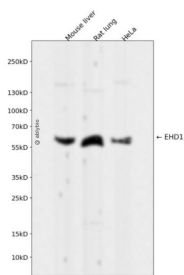
## 抗原信息

抗原信息	Recombinant fusion protein corresponding to Human EHD1.
序列	MFSWVSKDARRKKEPELFQTVAEGLRQLYAQKLLPLEEHYRFHEFHSPALEDADFDNKPMVLLVGQYSTGKTTFIRHLIEQDFPGMRIGPEPTTDSFIAV

## 靶点信息

研究背景	This gene belongs to a highly conserved gene family encoding EPS15 homology (EH) domain-containing proteins. The protein-binding EH domain was first noted in EPS15, a substrate for the epidermal growth factor receptor. The EH domain has been shown to be an important motif in proteins involved in protein-protein interactions and in intracellular sorting. The protein encoded by this gene is thought to play a role in the endocytosis of IGF1 receptors. Alternatively spliced transcript variants have been found for this gene. [provided by RefSeq, Sep 2013]
基因ID	10938
基因名	EHD1
Swiss	Q9H4M9
别名	H-PAST; HPAST1; PAST; PAST1

## 产品验证



Western blot analysis of EHD1 expressed in Mouse liver, Rat lung, HeLa using EHD1 Rabbit mAb at 1:1000. Secondary antibody: HRP Goat Anti-Rabbit IgG (H+L) at 1:5000. Lysates/proteins: 30ug per lane. Blocking buffer: 5% non-fat dry milk in TBST. Detection: ECL Enhanced Kit. Exposure time: 120s.

## 实验步骤

访问官网浏览详情: [www.ablybio.cn](http://www.ablybio.cn)