

PBRM1 Rabbit mAb

货号: **AYM30429**

产品信息

反应	Human,Mouse,Rat
宿主	Rabbit
克隆性	Monoclonal
预测反应	
应用	WB IHC IF/ICC FC
推荐浓度	WB: 1:500 - 1:2000 IHC: 1:50 - 1:200 IF/ICC: 1:50 - 1:200 FC: 1:20 - 1:50
理论分子量	193kDa
实测分子量	193kDa
形式	Liquid
保存条件	Store at -20°C. Avoid freeze / thaw cycles. Buffer: PBS with 0.75% BSA,50% glycerol,pH7.3.
偶联物	Unconjugated
阳性对照	HeLa,NIH/3T3,Jurkat,Rat brain
细胞定位	Nucleus
纯化	Affinity purification

抗原信息

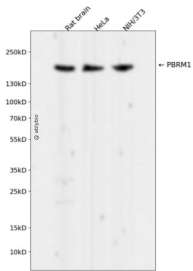
抗原信息	Recombinant fusion protein corresponding to Human PBRM1.
序列	VLEAREPGSGRRLCDLFMVKPSKKDYPDYKIIILEPMDLKIIEHNIRNDKYAGEEGMIEDMKLMFRNARHYNEEGSQVYND AHILEKLLKEKRKELGPLPDDDDMASPKLKLRSKSGISPKKSKYMTMPQKLNVEYEAVKNYTDKRGRRL

靶点信息

研究背景	This locus encodes a subunit of ATP-dependent chromatin-remodeling complexes. The encoded protein has been identified as an integral component of complexes necessary for ligand-dependent transcriptional activation by nuclear hormone receptors. Mutations at this locus have been associated with primary clear cell renal cell carcinoma. [provided by RefSeq, Feb 2012]
------	---

基因ID	55193
基因名	PBRM1
Swiss	Q86U86
别名	BAF180; PB1

产品验证



Western blot analysis of PBRM1 expressed in Rat brain, HeLa, NIH/3T3 using PBRM1 Rabbit mAb at 1:10 00. Secondary antibody: HRP Goat Anti-Rabbit IgG (H+L) at 1:5000. Lysates/proteins: 30ug per lane. B locking buffer: 5% non-fat dry milk in TBST. Detection: ECL Enhanced Kit. Exposure time: 120s.

实验步骤

访问官网浏览详情: www.ablybio.cn