

# CRMP1 Rabbit mAb

货号: **AYM30413**

## 产品信息

反应	Human,Mouse,Rat
宿主	Rabbit
克隆性	Monoclonal
预测反应	
应用	WB IHC IF/ICC IP FC
推荐浓度	<b>WB:</b> 1:500 - 1:2000 <b>IHC:</b> 1:50 - 1:200 <b>IF/ICC:</b> 1:50 - 1:200 <b>IP:</b> 1:20 - 1:50 <b>FC:</b> 1:20 - 1:50
理论分子量	62kDa/74kDa
实测分子量	62kDa
形式	Liquid
保存条件	Store at -20°C. Avoid freeze / thaw cycles. Buffer: PBS with 0.75% BSA,50% glycerol,pH7.3.
偶联物	Unconjugated
阳性对照	Rat brain
细胞定位	Cytoplasm,centrosome,cytoskeleton,microtubule organizing center,spindle
纯化	Affinity purification

## 抗原信息

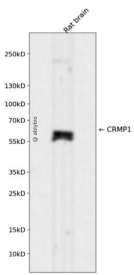
抗原信息	Recombinant fusion protein corresponding to Human CRMP1.
序列	NV NKG MGR FIP RKA FPE HLY QR V KIR NKV FGL QG VSR GMY DGP VYE VPAT PKY ATPAPSAKSSPSKHQPPPIRNLHQSNF S

## 靶点信息

研究背景	This gene encodes a member of a family of cytosolic phosphoproteins expressed exclusively in the nervous system. The encoded protein is thought to be a part of the semaphorin signal transduction pathway implicated in semaphorin-induced growth cone collapse during neural development. Alternative splicing results in multiple transcript variants.
------	---

基因ID	1400
基因名	CRMP1
Swiss	Q14194
别名	CRMP1;CRMP-1;DPYSL1;DRP-1;DRP1;ULIP-3

## 产品验证



Western blot analysis of CRMP1 expressed in Rat brain using CRMP1 Rabbit mAb at 1:1000. Secondary antibody: HRP Goat Anti-Rabbit IgG (H+L) at 1:5000. Lysates/proteins: 30ug per lane. Blocking buffer: 5% non-fat dry milk in TBST. Detection: ECL Enhanced Kit. Exposure time: 120s.

## 实验步骤

访问官网浏览详情: [www.ablybio.cn](http://www.ablybio.cn)