

# G6PD Rabbit mAb

货号: **AYM30405**

## 产品信息

反应	Human
宿主	Rabbit
克隆性	Monoclonal
预测反应	
应用	WB IHC ICC FC
推荐浓度	<b>WB:</b> 1:500 - 1:2000 <b>IHC:</b> 1:50 - 1:200 <b>ICC:</b> 1:50 - 1:200 <b>FC:</b> 1:20 - 1:50
理论分子量	59kDa/62kDa/63kDa
实测分子量	59kDa
形式	Liquid
保存条件	Store at -20°C. Avoid freeze / thaw cycles. Buffer: PBS with 0.75% BSA,50% glycerol,pH7.3.
偶联物	Unconjugated
阳性对照	MCF7
细胞定位	cytoplasm,cytoplasmic side of plasma membrane,cytosol,extracellular exosome,nucleus
纯化	Affinity purification

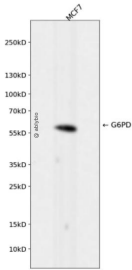
## 抗原信息

抗原信息	Recombinant fusion protein corresponding to Human G6PD.
序列	QIYRIDHYLGKEMVQNLMLVLRFANRIFGPIWNRDNIACVILTFKEPFGTEGRGGYFDEFGIIRDVMQNHLLQMLCLVAMEKP ASTNSDDVRDEKVKVLCISEVQANNVVLGQYVGNPDGEGEATKGYLDDPTVPRGTTATFAAVVLYVENERWDGVPFI LRCGKALNERKAEVRLQFHDVAGDIFHQQCKRNELVIRVQPNEAVYTKMMTKKPGMFFNPEESELDTYGNRYKNVKLPD AYERLILDVFCGSQMHFVRSDELREAWRIFTPLLHQIELEKPKPIPIYIGSRGPTEADELMKRVGFQYEGTYKWWNPHKL

## 靶点信息

研究背景	This gene encodes glucose-6-phosphate dehydrogenase. This protein is a cytosolic enzyme encoded by a housekeeping X-linked gene whose main function is to produce NADPH, a key electron donor in the defense against oxidizing agents and in reductive biosynthetic reactions. G6PD is remarkable for its genetic diversity. Many variants of G6PD, mostly produced from missense mutations, have been described with wide ranging levels of enzyme activity and associated clinical symptoms. G6PD deficiency may cause neonatal jaundice, acute hemolysis, or severe chronic non-spherocytic hemolytic anemia. Two transcript variants encoding different isoforms have been found for this gene.
基因ID	2539
基因名	G6PD
Swiss	P11413
别名	G6PD;G6PD1

## 产品验证



Western blot analysis of G6PD expressed in MCF7 using G6PD Rabbit mAb at 1:1000. Secondary antibody: HRP Goat Anti-Rabbit IgG (H+L) at 1:5000. Lysates/proteins: 30ug per lane. Blocking buffer: 5% non-fat dry milk in TBST. Detection: ECL Enhanced Kit. Exposure time: 120s.

## 实验步骤

访问官网浏览详情: [www.ablybio.cn](http://www.ablybio.cn)