

Phospho-alpha Tubulin (Y272) Rabbit mAb

货号: **AYM30399**

产品信息

反应	Human
宿主	Rabbit
克隆性	Monoclonal
预测反应	
应用	WB ICC
推荐浓度	WB: 1:500 - 1:2000 ICC: 1:50 - 1:200
理论分子量	50kDa
实测分子量	54kDa
形式	Liquid
保存条件	Store at -20°C. Avoid freeze / thaw cycles. Buffer: PBS with 0.75% BSA,50% glycerol,pH7.3.
偶联物	Unconjugated
阳性对照	
细胞定位	cytoplasm,cytoplasmic microtubule,microtubule cytoskeleton
纯化	Affinity purification

抗原信息

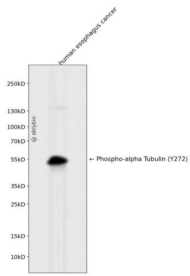
抗原信息	Recombinant fusion protein corresponding to Human Phospho-alpha Tubulin (Y272).
序列	

靶点信息

研究背景	Tubulin is the major constituent of microtubules. It binds two moles of GTP, one at an exchangeable site on the beta chain and one at a non-exchangeable site on the alpha chain.
基因ID	10376
基因名	TUBA1B

Swiss	P68363
别名	K-ALPHA-1

产品验证



Western blot analysis of Phospho-alpha Tubulin (Y272) expressed in human esophagus cancer using Phospho-alpha Tubulin (Y272) Rabbit mAb at 1:1000. Secondary antibody: HRP Goat Anti-Rabbit IgG (H+L) at 1:5000. Lysates/proteins: 30ug per lane. Blocking buffer: 5% non-fat dry milk in TBST. Detection: ECL Enhanced Kit. Exposure time: 120s.

实验步骤

访问官网浏览详情: www.ablybio.cn