

CD239 Rabbit mAb

货号: **AYM30397**

产品信息

反应	Human,Mouse,Rat
宿主	Rabbit
克隆性	Monoclonal
预测反应	
应用	WB IHC IP FC
推荐浓度	WB: 1:500 - 1:2000 IHC: 1:50 - 1:200 IP: 1:20 - 1:50 FC: 1:20 - 1:50
理论分子量	67kDa
实测分子量	85kDa
形式	Liquid
保存条件	Store at -20°C. Avoid freeze / thaw cycles. Buffer: PBS with 0.75% BSA,50% glycerol,pH7.3.
偶联物	Unconjugated
阳性对照	Mouse lung
细胞定位	Membrane,Single-pass type I membrane protein
纯化	Affinity purification

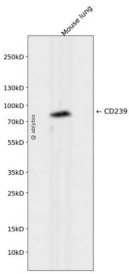
抗原信息

抗原信息	Recombinant fusion protein corresponding to Human CD239.
序列	KTLELRVAYLDPLELSEGKVLSPLNSSAVVNCSVHGLPTPALRWTKDSTPLGDGPMLSLSSITFDSNGTYVCEASLPTVPV LSRTQNFTLLVQGSPCLKTAEIEPKADGSWREGDEVTLICARGHPDPKLSWSQLGGSPAEPPIGRQGWVSSSLTLKVTS ALSRDGISCEASNPHGNKRHVHFHFGTVSPQTSQA

靶点信息

研究背景	This gene encodes Lutheran blood group glycoprotein, a member of the immunoglobulin superfamily and a receptor for the extracellular matrix protein, laminin. The protein contains five extracellular immunoglobulin domains, a single transmembrane domain, and a short C-terminal cytoplasmic tail. This protein may play a role in epithelial cell cancer and in vaso-occlusion of red blood cells in sickle cell disease. Polymorphisms in this gene define some of the antigens in the Lutheran system and also the Auberger system. Inactivating variants of this gene result in the recessive Lutheran null phenotype, Lu(a-b-), of the Lutheran blood group. Two transcript variants encoding different isoforms have been found for this gene.
基因ID	4059
基因名	BCAM
Swiss	P50895
别名	BCAM;AU;CD239;LU;MSK19

产品验证



Western blot analysis of CD239 expressed in Mouse lung using CD239 Rabbit mAb at 1:1000. Secondary antibody: HRP Goat Anti-Rabbit IgG (H+L) at 1:5000. Lysates/proteins: 30ug per lane. Blocking buffer: 5% non-fat dry milk in TBST. Detection: ECL Enhanced Kit. Exposure time: 120s.

实验步骤

访问官网浏览详情: www.ablybio.cn