

# CLPX Rabbit mAb

货号: **AYM30389**

## 产品信息

反应	Human,Mouse,Rat
宿主	Rabbit
克隆性	Monoclonal
预测反应	
应用	WB ICC
推荐浓度	<b>WB:</b> 1:500 - 1:2000 <b>ICC:</b> 1:50 - 1:200
理论分子量	
实测分子量	60kDa
形式	Liquid
保存条件	Store at -20°C. Avoid freeze / thaw cycles. Buffer: PBS with 0.75% BSA,50% glycerol,pH7.3.
偶联物	Unconjugated
阳性对照	Mouse liver,Rat live
细胞定位	cytosol,mitochondrial endopeptidase Clp complex,mitochondrial inner membrane,mitochondrial matrix,mitochondrial nucleoid,mitochondrion,nucleoplasm
纯化	Affinity purification

## 抗原信息

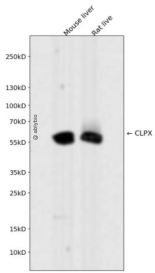
抗原信息	Recombinant fusion protein corresponding to Human CLPX.
序列	LPVVVPLHSLDEKTLVQILTEPRNAVIPQYQALFSMDKCELVNTEDEKAIARLALERKTGARGLRISIMEKLLLEPMFEVPSNDIVCVEVDKEVVEGKKEP

## 靶点信息

研究背景	The protein encoded by this gene is part of a protease found in mitochondria. This protease is ATP-dependent and targets specific proteins for degradation. The protease consists of two heptameric rings of the CLPP catalytic subunit sandwiched between two hexameric rings of the chaperone subunit encoded by this gene. Targeted proteins are unwound by this protein and then passed on to the CLPP subunit for degradation. Two transcript variants, one protein-coding and the other non-protein coding, have been found for this gene.
------	--

基因ID	10845
基因名	CLPX
Swiss	O76031
别名	CLPX

## 产品验证



Western blot analysis of CLPX expressed in Mouse liver, Rat liver using CLPX Rabbit mAb at 1:1000. Secondary antibody: HRP Goat Anti-Rabbit IgG (H+L) at 1:5000. Lysates/proteins: 30ug per lane. Blocking buffer: 5% non-fat dry milk in TBST. Detection: ECL Enhanced Kit. Exposure time: 120s.

## 实验步骤

访问官网浏览详情: [www.ablybio.cn](http://www.ablybio.cn)