

# Cullin 2 Rabbit mAb

货号: **AYM30375**

## 产品信息

反应	Human,Mouse,Rat
宿主	Rabbit
克隆性	Monoclonal
预测反应	
应用	WB IF/ICC IP FC
推荐浓度	<b>WB:</b> 1:500 - 1:2000 <b>IF/ICC:</b> 1:50 - 1:200 <b>IP:</b> 1:20 - 1:50 <b>FC:</b> 1:20 - 1:50
理论分子量	86kDa/89kDa
实测分子量	87kDa
形式	Liquid
保存条件	Store at -20°C. Avoid freeze / thaw cycles. Buffer: PBS with 0.75% BSA,50% glycerol,pH7.3.
偶联物	Unconjugated
阳性对照	PC-3,K-562,HL-60,293T,OVCAR3
细胞定位	cytosol,nucleolus,nucleoplasm
纯化	Affinity purification

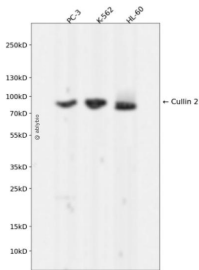
## 抗原信息

抗原信息	Recombinant fusion protein corresponding to Human Cullin 2.
序列	LEYVERATWNDRFSDIYALCVAYPEPLGERLYTETKIFLENHVRHLHKRVLESEEQVLVMYHRYWEEYSKGADYMDCLYRYLNTQFIKKNLTEADLQYGYGGVDMNEPLMEIGELALDMWRKLMVEPLQAILIRMLLREIKNDRGGEDPNQKVIHGVINISFVHVEQYKKKFKFYQEIFESPFLTETGEYKQEQASNLLQESNCSQYMEKVLGRLKDEEIRCRKYLHPSSYTKVIHECQRMVADHLQLHAECHNIIRQEKKNDMANM

## 靶点信息

研究背景	Core component of multiple cullin-RING-based ECS (ElonginB/C-CUL2/5-SOCS-box protein E3 ubiquitin-protein ligase complexes, which mediate the ubiquitination of target proteins. CUL2 may serve as a rigid scaffold in the complex and may contribute to catalysis through positioning of the substrate and the ubiquitin-conjugating enzyme. The E3 ubiquitin-protein ligase activity of the complex is dependent on the neddylation of the cullin subunit and is inhibited by the association of the deneddylated cullin subunit with TIP120 A/CAND1. The functional specificity of the ECS complex depends on the substrate recognition component. ECS(VHL mediates the ubiquitination of hypoxia-inducible factor (HIF. A number of ECS complexes (containing either KLHDC2, KLHDC3, KLHDC10, APPBP2, FEM1A, FEM1B or FEM1C as substrate-recognition component are part of the DesCEND (destruction via C-end degrons pathway, which recognizes a C-degron located at the extreme C terminus of target proteins, leading to their ubiquitination and degradation. ECS complexes and ARIH1 collaborate in tandem to mediate ubiquitination of target proteins.
基因ID	8453
基因名	CUL2
Swiss	Q13617
别名	CUL2;cullin-2

## 产品验证



Western blot analysis of Cullin 2 expressed in PC-3, K-562, HL-60 using Cullin 2 Rabbit mAb at 1:1000. Secondary antibody: HRP Goat Anti-Rabbit IgG (H+L) at 1:5000. Lysates/proteins: 30ug per lane. Blocking buffer: 5% non-fat dry milk in TBST. Detection: ECL Enhanced Kit. Exposure time: 120s.

## 实验步骤

访问官网浏览详情: [www.ablybio.cn](http://www.ablybio.cn)