

AP2S1 Rabbit mAb

货号: **AYM30366**

产品信息

反应	Human,Mouse,Rat
宿主	Rabbit
克隆性	Monoclonal
预测反应	
应用	WB IHC IP
推荐浓度	WB: 1:500 - 1:2000 IHC: 1:50 - 1:200 IP: 1:20 - 1:50
理论分子量	12kDa/17kDa
实测分子量	17kDa
形式	Liquid
保存条件	Store at -20°C. Avoid freeze / thaw cycles. Buffer: PBS with 0.75% BSA,50% glycerol,pH7.3.
偶联物	Unconjugated
阳性对照	HeLa,LO2,SH-SY5Y,Mouse brain,Mouse kidney,Mouse spleen,Rat brain,Rat spleen
细胞定位	Cell membrane,Cytoplasmic side,Membrane,Peripheral membrane protein,coated pit
纯化	Affinity purification

抗原信息

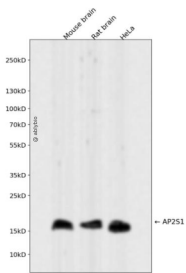
抗原信息	Recombinant fusion protein corresponding to Human AP2S1.
------	--

靶点信息

研究背景	One of two major clathrin-associated adaptor complexes, AP-2, is a heterotetramer which is associated with the plasma membrane. This complex is composed of two large chains, a medium chain, and a small chain. This gene encodes the small chain of this complex. Alternative splicing results in multiple transcript variants.
基因ID	1175
基因名	AP2S1

Swiss	P53680
别名	AP2S1

产品验证



Western blot analysis of AP2S1 expressed in Mouse brain,Rat brain,HeLa using AP2S1 Rabbit mAb at 1:1000. Secondary antibody: HRP Goat Anti-Rabbit IgG (H+L) at 1:5000. Lysates/proteins: 30ug per lane. Blocking buffer: 5% non-fat dry milk in TBST. Detection: ECL Enhanced Kit. Exposure time: 120s.

实验步骤

访问官网浏览详情: www.ablybio.cn