

AP2M1 Rabbit mAb

货号: **AYM30362**

产品信息

反应	Human,Mouse,Rat
宿主	Rabbit
克隆性	Monoclonal
预测反应	
应用	WB
推荐浓度	WB: 1:500 - 1:2000
理论分子量	49kDa
实测分子量	50kDa
形式	Liquid
保存条件	Store at -20°C. Avoid freeze / thaw cycles. Buffer: PBS with 0.75% BSA,50% glycerol,pH7.3.
偶联物	Unconjugated
阳性对照	HeLa,Mouse brain,Rat brain
细胞定位	Cell membrane,Cytoplasmic side,Membrane,Peripheral membrane protein,coated pit
纯化	Affinity purification

抗原信息

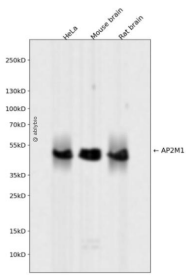
抗原信息	Recombinant fusion protein corresponding to Human AP2M1.
序列	TQQGIKSQHQTKEEQSQITSQVTGQIGWRREGIKYRRNELFLDVLESVNULLMSPQGQVLSAHVSGRVVMKSYLSGMPEC KFGMNDKIVIEKQGKGTADETSKSGKQSIADDCTFHQCVRLSKFDSERSISFIPPDGEFELMRYRTTKDIILPFRVIPLVREV GRTKLEVKVVIKSNFKPSLLAQKIEVRIPTPLNTSGVQVICMKGKAKYKASENAIVWKIKRMAGMKESQISAEIELLPTNDKKK WARPPISMNFEVFPFAPSGLKVRYLKVFEPLNYSDDHVIKVVRYIGRSGIYET

靶点信息

研究背景	This gene encodes a subunit of the heterotetrameric coat assembly protein complex 2 (AP2), which belongs to the adaptor complexes medium subunits family. The encoded protein is required for the activity of a vacuolar ATPase, which is responsible for proton pumping occurring in the acidification of endosomes and lysosomes. The encoded protein may also play an important role in regulating the intracellular trafficking and function of CTLA-4 protein. Three transcript variants encoding different isoforms have been found for this gene.
------	--

基因ID	1173
基因名	AP2M1
Swiss	Q96CW1
别名	AP2M1;AP50;CLAPM1;mu2

产品验证



Western blot analysis of AP2M1 expressed in HeLa, Mouse brain, Rat brain using AP2M1 Rabbit mAb at 1:1000. Secondary antibody: HRP Goat Anti-Rabbit IgG (H+L) at 1:5000. Lysates/proteins: 30ug per lane. Blocking buffer: 5% non-fat dry milk in TBST. Detection: ECL Enhanced Kit. Exposure time: 120s.

实验步骤

访问官网浏览详情: www.ablybio.cn