

MTCO2 Rabbit mAb

货号: **AYM30357**

产品信息

反应	Human
宿主	Rabbit
克隆性	Monoclonal
预测反应	
应用	WB IHC IF/ICC IP FC
推荐浓度	WB: 1:500 - 1:2000 IHC: 1:50 - 1:200 IF/ICC: 1:50 - 1:200 IP: 1:20 - 1:50 FC: 1:20 - 1:50
理论分子量	25kDa
实测分子量	21kDa
形式	Liquid
保存条件	Store at -20°C. Avoid freeze / thaw cycles. Buffer: PBS with 0.75% BSA,50% glycerol,pH7.3.
偶联物	Unconjugated
阳性对照	Mouse liver,Mouse heart,Mouse kidney,Rat liver,Rat kidney
细胞定位	Mitochondrion inner membrane,Multi-pass membrane protein
纯化	Affinity purification

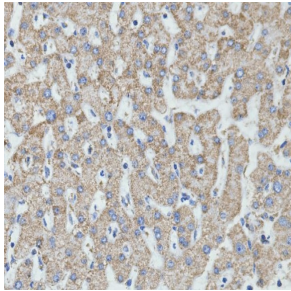
抗原信息

抗原信息	Recombinant fusion protein corresponding to Human MTCO2.
序列	MGHQWYWSYEYTDYEDLCFDSYMIPTNDLKPGE LRLLEVDNRVVLPMELPIRMLISSEDLHSWAVPSLGLKTD AIPGR LN QATVTSNRPGFLFYGCSEIC

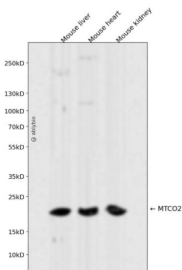
靶点信息

研究背景	Component of the cytochrome c oxidase, the last enzyme in the mitochondrial electron transport chain which drives oxidative phosphorylation. The respiratory chain contains 3 multisubunit complexes succinate dehydrogenase (complex II, CII, ubiquinol-cytochrome c oxidoreductase (cytochrome b-c1 complex, complex III, CIII and cytochrome c oxidase (complex IV, CIV, that cooperate to transfer electrons derived from NADH and succinate to molecular oxygen, creating an electrochemical gradient over the inner membrane that drives transmembrane transport and the ATP synthase. Cytochrome c oxidase is the component of the respiratory chain that catalyzes the reduction of oxygen to water. Electrons originating from reduced cytochrome c in the intermembrane space (IMS) are transferred via the dinuclear copper A center (CU(A) of subunit 2 and heme A of subunit 1 to the active site in subunit 1, a binuclear center (BNC formed by heme A3 and copper B (CU(B). The BNC reduces molecular oxygen to 2 water molecules using 4 electrons from cytochrome c in the IMS and 4 protons from the mitochondrial matrix.
基因ID	17709
基因名	
Swiss	P00403
别名	MT-CO2;COII;MTCO2;COX2

产品验证



Immunohistochemical analysis of paraffin-embedded human liver, using MTCO2 Antibody.



Western blot analysis of MTCO2 expressed in Mouse liver, Mouse heart, Mouse kidney using MTCO2 Rabbit mAb at 1:1000. Secondary antibody: HRP Goat Anti-Rabbit IgG (H+L) at 1:5000. Lysates/proteins: 30ug per lane. Blocking buffer: 5% non-fat dry milk in TBST. Detection: ECL Enhanced Kit. Exposure time: 120s.

实验步骤

访问官网浏览详情: www.ablybio.cn