

# FHL1 Rabbit mAb

货号: **AYM30350**

## 产品信息

|       |   |
|-------|---|
| 反应    | Human,Mouse,Rat   |
| 宿主    | Rabbit  |
| 克隆性   | Monoclonal  |
| 预测反应  |   |
| 应用    | WB IHC IP   |
| 推荐浓度  | <b>WB:</b> 1:500 - 1:2000<br><b>IHC:</b> 1:50 - 1:200<br><b>IP:</b> 1:20 - 1:50               |
| 理论分子量 | 22kDa/31kDa/33kDa/34kDa/36kDa   |
| 实测分子量 | 30kDa   |
| 形式    | Liquid  |
| 保存条件  | Store at -20°C. Avoid freeze / thaw cycles.<br>Buffer: PBS with 0.75% BSA,50% glycerol,pH7.3. |
| 偶联物   | Unconjugated  |
| 阳性对照  | U-251MG,22Rv1,MCF7,Mouse kidney   |
| 细胞定位  | Cytoplasm,Nucleus,cytosol   |
| 纯化    | Affinity purification   |

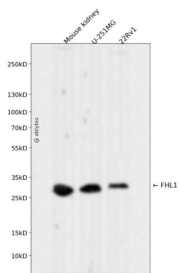
## 抗原信息

|      |   |
|------|---|
| 抗原信息 | Recombinant fusion protein corresponding to Human FHL1.   |
| 序列   | RDPLQGKKYVQKDGHHCLKCFDKFCANTCVECCKPIGADSKVEVHYKNRFWHDTCFRCAKCLHPLANETFVAKDNKILC<br>NKCTTREDSPKCKGCFKAIVAGDQNVVEYKGTVWHKDCFTCSNCKQVIGTGSFFPKGEDFYCVTCHETKFAKHCVKCNKAI<br>TSGGITYQDQPWHADCFVCVTCSKLAGQRFTAVEDQYYCVDCYKNFVAKKAGCKNPITGFGKGSVWAYEGQSWHD<br>YCFHCKKCSVNLANKRFVVFHQEQVYCPDCAKKL |

## 靶点信息

|       |   |
|-------|---|
| 研究背景  | This gene encodes a member of the four-and-a-half-LIM-only protein family. Family members contain two highly conserved, tandemly arranged, zinc finger domains with four highly conserved cysteines binding a zinc atom in each zinc finger. Expression of these family members occurs in a cell- and tissue-specific mode and these proteins are involved in many cellular processes. Mutations in this gene have been found in patients with Emery-Dreifuss muscular dystrophy. Multiple alternately spliced transcript variants which encode different protein isoforms have been described. |
| 基因ID  | 2273  |
| 基因名   | FHL1  |
| Swiss | Q13642  |
| 别名    | FHL1;FHL-1;FHL1A;FHL1B;FLH1A;KYOT;RBMX1A;RBMX1B;SLIM;SLIM-1;SLIM1;SLIMMER;XMPMA   |

## 产品验证



Western blot analysis of FHL1 expressed in Mouse kidney,U-251MG,22Rv1 using FHL1 Rabbit mAb at 1:1000. Secondary antibody: HRP Goat Anti-Rabbit IgG (H+L) at 1:5000. Lysates/proteins: 30ug per lane. Blocking buffer: 5% non-fat dry milk in TBST. Detection: ECL Enhanced Kit. Exposure time: 120s.

## 实验步骤

访问官网浏览详情: [www.ablybio.cn](http://www.ablybio.cn)