

PDX1 Rabbit mAb

货号: **AYM30349**

产品信息

反应	Human
宿主	Rabbit
克隆性	Monoclonal
预测反应	
应用	WB IHC IF/ICC
推荐浓度	WB: 1:500 - 1:2000 IHC: 1:50 - 1:200 IF/ICC: 1:50 - 1:200
理论分子量	30kDa
实测分子量	42kDa
形式	Liquid
保存条件	Store at -20°C. Avoid freeze / thaw cycles. Buffer: PBS with 0.75% BSA, 50% glycerol, pH7.3.
偶联物	Unconjugated
阳性对照	Mouse intestine
细胞定位	Cytoplasm, Nucleus, cytosol
纯化	Affinity purification

抗原信息

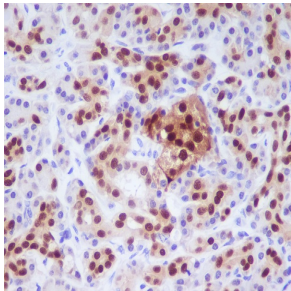
抗原信息	Recombinant fusion protein corresponding to Human PDX1.
序列	MNGEEQYYAATQLYKDFCAFQRGPAPEFSASPPACLYMGRQPPPPPPHPFPGALGALEQGSPDISPYEVPPLADDDPAVALHHHLPAQLALPHPPAGPF

靶点信息

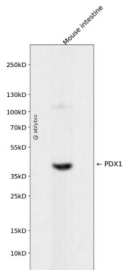
研究背景	The protein encoded by this gene is a transcriptional activator of several genes, including insulin, somatostatin, glucokinase, islet amyloid polypeptide, and glucose transporter type 2. The encoded nuclear protein is involved in the early development of the pancreas and plays a major role in glucose-dependent regulation of insulin gene expression. Defects in this gene are a cause of pancreatic agenesis, which can lead to early-onset insulin-dependent diabetes mellitus (NIDDM), as well as maturity onset diabetes of the young type 4 (MODY4).
------	--

基因ID	3651
基因名	PDX1
Swiss	P52945
别名	PDX1;GSF;IDX-1;IPF1;IUF1;MODY4;PAGEN1;PDX-1;STF-1

产品验证



Immunohistochemical analysis of paraffin-embedded human pancreas, using PDX1 Antibody.



Western blot analysis of PDX1 expressed in Mouse intestine using PDX1 Rabbit mAb at 1:1000. Secondary antibody: HRP Goat Anti-Rabbit IgG (H+L) at 1:5000. Lysates/proteins: 30ug per lane. Blocking buffer: 5% non-fat dry milk in TBST. Detection: ECL Enhanced Kit. Exposure time: 1 20s.

实验步骤

访问官网浏览详情: www.ablybio.cn