

# KSR1 Rabbit mAb

货号: **AYM30341**

## 产品信息

反应	Human,Mouse,Rat
宿主	Rabbit
克隆性	Monoclonal
预测反应	
应用	WB IHC
推荐浓度	<b>WB:</b> 1:500 - 1:2000 <b>IHC:</b> 1:50 - 1:200
理论分子量	84kDa/87kDa/97kDa/102kDa
实测分子量	120kDa
形式	Liquid
保存条件	Store at -20°C. Avoid freeze / thaw cycles. Buffer: PBS with 0.75% BSA,50% glycerol,pH7.3.
偶联物	Unconjugated
阳性对照	U-251MG,HeLa,Jurkat,mouse brain,mouse spleen,mouse testis,mouse kidney,mouse lung,rat brain
细胞定位	Cytoplasm,Endoplasmic reticulum membrane,Membrane,Peripheral membrane protein
纯化	Affinity purification

## 抗原信息

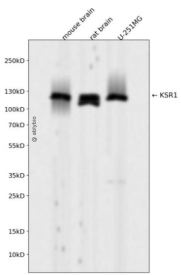
抗原信息	Recombinant fusion protein corresponding to Human KSR1.
序列	SSPAPFPTSSNPSSATTPNPSPGQRDSRFNFPAAYFIHHRQQFIFPVPSAGHCWKLLIAESLKENAFNISAFHAHAAPLPEA ADGTRLDDQPKADVLEAH

## 靶点信息

研究背景	Part of a multiprotein signaling complex which promotes phosphorylation of Raf family members and activation of downstream MAP kinases (By similarity. Independently of its kinase activity, acts as MAP2K1/MEK1 and MAP2K2/MEK2-dependent allosteric activator of BRAF; upon binding to MAP2K1/MEK1 or MAP2K2/MEK2, dimerizes with BRAF and promotes BRAF-mediated phosphorylation of MAP2K1/MEK1 and/or MAP2K2/MEK2. Promotes activation of MAPK1 and/or MAPK3, both in response to EGF and to cAMP (By similarity. Its kinase activity is unsure (By similarity. Some protein kinase activity has been detected in vitro, however the physiological relevance of this activity is unknown (By similarity.
------	--

基因ID	8844
基因名	KSR1
Swiss	Q81VT5
别名	KSR1;KSR;RSU2

## 产品验证



Western blot analysis of KSR1 expressed in mouse brain, rat brain, U-251MG using KSR1 Rabbit mAb at 1:1000. Secondary antibody: HRP Goat Anti-Rabbit IgG (H+L) at 1:5000. Lysates/proteins: 30ug per lane. Blocking buffer: 5% non-fat dry milk in TBST. Detection: ECL Enhanced Kit. Exposure time: 120s.

## 实验步骤

访问官网浏览详情: [www.ablybio.cn](http://www.ablybio.cn)