

SAM68 Rabbit mAb

货号: **AYM30340**

产品信息

反应	Human,Mouse,Rat
宿主	Rabbit
克隆性	Monoclonal
预测反应	
应用	WB IHC IF/ICC
推荐浓度	WB: 1:500 - 1:2000 IHC: 1:50 - 1:200 IF/ICC: 1:50 - 1:200
理论分子量	44kDa/45kDa/48kDa
实测分子量	68kDa
形式	Liquid
保存条件	Store at -20°C. Avoid freeze / thaw cycles. Buffer: PBS with 0.75% BSA,50% glycerol,pH7.3.
偶联物	Unconjugated
阳性对照	SKOV3,HeLa,Jurkat,PC-12,Mouse brain,Rat brain
细胞定位	Membrane,Nucleus
纯化	Affinity purification

抗原信息

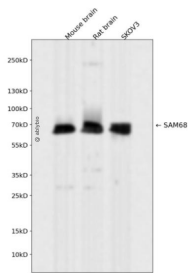
抗原信息	Recombinant fusion protein corresponding to Human SAM68.
序列	VPRGRGVGPPRGALVRGTPVRGAI TRGATVTRGVPPPPTVRGAPAPRARTAGIQRIP LPPPPAPET YEEYGYDDTYAEQSYE GYEGYYSQSQGDSEYYDYG HGEVQDSYEAYGQDDWNGTRPSLKAPPARPVKGAYREHPYGRY

靶点信息

研究背景	This gene encodes a member of the K homology domain-containing, RNA-binding, signal transduction-associated protein family. The encoded protein appears to have many functions and may be involved in a variety of cellular processes, including alternative splicing, cell cycle regulation, RNA 3'-end formation, tumorigenesis, and regulation of human immunodeficiency virus gene expression. Alternative splicing results in multiple transcript variants.
------	--

基因ID	10657
基因名	KHDRBS1
Swiss	Q07666
别名	KHDRBS1;Sam68;p62;p68

产品验证



Western blot analysis of SAM68 expressed in Mouse brain,Rat brain,SKOV3 using SAM68 Rabbit mAb at 1:1000. Secondary antibody: HRP Goat Anti-Rabbit IgG (H+L) at 1:5000. Lysates/proteins: 30ug per lane. Blocking buffer: 5% non-fat dry milk in TBST. Detection: ECL Enhanced Kit. Exposure time: 120s.

实验步骤

访问官网浏览详情: www.ablybio.cn