

Engrailed 1 Rabbit mAb

货号: **AYM30335**

产品信息

反应	Human,Mouse,Rat
宿主	Rabbit
克隆性	Monoclonal
预测反应	
应用	WB IP FC
推荐浓度	WB: 1:500 - 1:2000 IP: 1:20 - 1:50 FC: 1:20 - 1:50
理论分子量	55kDa
实测分子量	55kDa
形式	Liquid
保存条件	Store at -20°C. Avoid freeze / thaw cycles. Buffer: PBS with 0.75% BSA,50% glycerol,pH7.3.
偶联物	Unconjugated
阳性对照	SH-SY5Y,Mouse brain,Rat brain
细胞定位	nucleus
纯化	Affinity purification

抗原信息

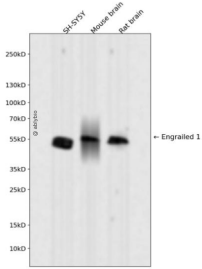
抗原信息	Recombinant fusion protein corresponding to Human Engrailed 1.
序列	KLK KKKNEKEDKRPTAFTAEQLQLKAEFQANRYITEQRRQTLAQELSLNESQIKIWFQNKRAKIKKATGIKNGLALHLMA QGLYNHSTTTVQDKDESE

靶点信息

研究背景	Homeobox-containing genes are thought to have a role in controlling development. In Drosophila, the 'engrailed' (en) gene plays an important role during development in segmentation, where it is required for the formation of posterior compartments. Different mutations in the mouse homologs, En1 and En2, produced different developmental defects that frequently are lethal. The human engrailed homologs 1 and 2 encode homeodomain-containing proteins and have been implicated in the control of pattern formation during development of the central nervous system. [provided by RefSeq, Jul 2008]
------	--

基因ID	2019
基因名	EN1
Swiss	Q05925
别名	

产品验证



Western blot analysis of Engrailed 1 expressed in SH-SY5Y, Mouse brain, Rat brain using Engrailed 1 Rabbit mAb at 1:1000. Secondary antibody: HRP Goat Anti-Rabbit IgG (H+L) at 1:5000. Lysates/proteins: 30ug per lane. Blocking buffer: 5% non-fat dry milk in TBST. Detection: ECL Enhanced Kit. Exposure time: 120s.

实验步骤

访问官网浏览详情: www.ablybio.cn