

# Cyclin B2 Rabbit mAb

货号: **AYM30332**

## 产品信息

反应	Human,Mouse,Rat
宿主	Rabbit
克隆性	Monoclonal
预测反应	
应用	WB IHC IF/ICC IP
推荐浓度	<b>WB:</b> 1:500 - 1:2000 <b>IHC:</b> 1:50 - 1:200 <b>IF/ICC:</b> 1:50 - 1:200 <b>IP:</b> 1:20 - 1:50
理论分子量	45kDa
实测分子量	45kDa
形式	Liquid
保存条件	Store at -20°C. Avoid freeze / thaw cycles. Buffer: PBS with 0.75% BSA,50% glycerol,pH7.3.
偶联物	Unconjugated
阳性对照	HeLa,SW480,DU145,A-431,K-562,Mouse thymus
细胞定位	centrosome,cytoplasm,cytosol,microtubule cytoskeleton,nucleus
纯化	Affinity purification

## 抗原信息

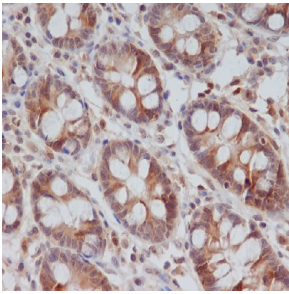
抗原信息	Recombinant fusion protein corresponding to Human Cyclin B2.
序列	MALLRRPTVSSDLENIDTGVNSKVKSHVTIRRTVLEEIGNRVTTTRAAQVAKKAQNTKVPVQPTKTTNVNKQLKPTASVKPV QMEKLAPKGPSPTPEDVSM

## 靶点信息

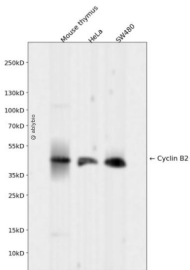
研究背景	Cyclin B2 is a member of the cyclin family, specifically the B-type cyclins. The B-type cyclins, B1 and B2, associate with p34cdc2 and are essential components of the cell cycle regulatory machinery. B1 and B2 differ in their subcellular localization. Cyclin B1 co-localizes with microtubules, whereas cyclin B2 is primarily associated with the Golgi region. Cyclin B2 also binds to transforming growth factor beta RII and thus cyclin B2/cdc2 may play a key role in transforming growth factor beta-mediated cell cycle control.
------	--

基因ID	9133
基因名	CCNB2
Swiss	O95067
别名	CCNB2;HsT17299;cyclin B2

## 产品验证



Immunohistochemical analysis of paraffin-embedded human colon, using Cyclin B2 Antibody.



Western blot analysis of Cyclin B2 expressed in Mouse thymus, HeLa, SW480 using Cyclin B2 Rabbit mAb at 1:1000. Secondary antibody: HRP Goat Anti-Rabbit IgG (H+L) at 1:5000. Lysates/proteins: 30ug per lane. Blocking buffer: 5% non-fat dry milk in TBST. Detection: ECL Enhanced Kit. Exposure time: 120s.

## 实验步骤

访问官网浏览详情: [www.ablybio.cn](http://www.ablybio.cn)