

RAD18 Rabbit mAb

货号: **AYM30331**

产品信息

反应	Human,Mouse,Rat
宿主	Rabbit
克隆性	Monoclonal
预测反应	
应用	WB FC
推荐浓度	WB: 1:500 - 1:2000 FC: 1:20 - 1:50
理论分子量	56kDa
实测分子量	56kDa
形式	Liquid
保存条件	Store at -20°C. Avoid freeze / thaw cycles. Buffer: PBS with 0.75% BSA,50% glycerol,pH7.3.
偶联物	Unconjugated
阳性对照	MCF7
细胞定位	Cytoplasm,Nucleus,centrosome,cytoskeleton,microtubule organizing center
纯化	Affinity purification

抗原信息

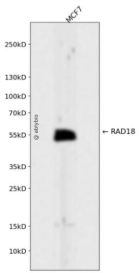
抗原信息	Recombinant fusion protein corresponding to Human RAD18.
序列	INKHLDSCLSREEKKEslrSSVHkrkPLPKTVYNLLSDRDLKkkLKEHGLSIQGNKQQLIKRHQEFVHMYNAQCDALHPKS AAEIVREIENIEKTRMRLEASKLNESVMVFTKDQTEKEIDEIHSKYRKKHKSEFQLLVDQARKGYKKIAGMSQKTVTITKEDE STeKLSsVCMGQEDNMTSVTNHFSQSKLDSPEELEPDREEDSSSIDIQEVLSSSESdSCNSSSSDIIRDLLLLLEEEAAWEAS HKNDLQDTEISPRQNRRTAAESAEIEPRNKRNRN

靶点信息

研究背景	The protein encoded by this gene is highly similar to <i>S. cerevisiae</i> DNA damage repair protein Rad18. Yeast Rad18 functions through its interaction with Rad6, which is an ubiquitin-conjugating enzyme required for post-replication repair of damaged DNA. Similar to its yeast counterpart, this protein is able to interact with the human homolog of yeast Rad6 protein through a conserved ring-finger motif. Mutation of this motif results in defective replication of UV-damaged DNA and hypersensitivity to multiple mutagens.
------	------------------------------------------------------------------------------------------------------------------------------------------------------------------------------------------------------------------------------------------------------------------------------------------------------------------------------------------------------------------------------------------------------------------------------------------------------------------------------------------------------------------------------------------------

基因ID	56852
基因名	RAD18
Swiss	Q9NS91
别名	RAD18;RNF73

产品验证



Western blot analysis of RAD18 expressed in MCF7 using RAD18 Rabbit mAb at 1:1000. Secondary antibody: HRP Goat Anti-Rabbit IgG (H+L) at 1:5000. Lysates/proteins: 30ug per lane. Blocking buffer: 5% non-fat dry milk in TBST. Detection: ECL Enhanced Kit. Exposure time: 120s.

实验步骤

访问官网浏览详情: www.ablybio.cn