

RPS8 Rabbit mAb

货号: **AYM30330**

产品信息

反应	Human,Mouse,Rat
宿主	Rabbit
克隆性	Monoclonal
预测反应	
应用	WB IF/ICC IP FC
推荐浓度	WB: 1:500 - 1:2000 IF/ICC: 1:50 - 1:200 IP: 1:20 - 1:50 FC: 1:20 - 1:50
理论分子量	24kDa
实测分子量	24kDa
形式	Liquid
保存条件	Store at -20°C. Avoid freeze / thaw cycles. Buffer: PBS with 0.75% BSA,50% glycerol,pH7.3.
偶联物	Unconjugated
阳性对照	SGC-7901,HeLa,Mouse pancreas,Mouse ovary,Rat pancreas
细胞定位	cytoplasm,cytosol,cytosolic ribosome,endoplasmic reticulum,extracellular exosome,focal adhesion,nucleoplasm,nucleus
纯化	Affinity purification

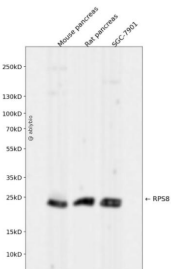
抗原信息

抗原信息	Recombinant fusion protein corresponding to Human RPS8.
序列	KRRKTGGKRKPYHKKRKYELGRPAANTKIGPRRIHTVRVRGGNKKYRALRLDVGNFSWGSECCTRKTRIIDVVYNASNELVRTKTLVKNC

靶点信息

研究背景	Ribosomes, the organelles that catalyze protein synthesis, consist of a small 40S subunit and a large 60S subunit. Together these subunits are composed of 4 RNA species and approximately 80 structurally distinct proteins. This gene encodes a ribosomal protein that is a component of the 40S subunit. The protein belongs to the S8E family of ribosomal proteins. It is located in the cytoplasm. Increased expression of this gene in colorectal tumors and colon polyps compared to matched normal colonic mucosa has been observed. This gene is co-transcribed with the small nucleolar RNA genes U38A, U38B, U39, and U40, which are located in its fourth, fifth, first, and second introns, respectively. As is typical for genes encoding ribosomal proteins, there are multiple processed pseudogenes of this gene dispersed through the genome.
基因ID	6202
基因名	RPS8
Swiss	P62241
别名	S8;RPS8

产品验证



Western blot analysis of RPS8 expressed in Mouse pancreas, Rat pancreas, SGC-7901 using RPS8 Rabbit mAb at 1:1000. Secondary antibody: HRP Goat Anti-Rabbit IgG (H+L) at 1:5000. Lysates/proteins: 30ug per lane. Blocking buffer: 5% non-fat dry milk in TBST. Detection: ECL Enhanced Kit. Exposure time: 120 s.

实验步骤

访问官网浏览详情: www.ablybio.cn