

Integrin alpha 2 Rabbit mAb

货号: **AYM30329**

产品信息

反应	Human,Mouse,Rat
宿主	Rabbit
克隆性	Monoclonal
预测反应	
应用	WB IHC IF/ICC IP FC
推荐浓度	WB: 1:500 - 1:2000 IHC: 1:50 - 1:200 IF/ICC: 1:50 - 1:200 IP: 1:20 - 1:50 FC: 1:20 - 1:50
理论分子量	129kDa
实测分子量	150kDa
形式	Liquid
保存条件	Store at -20°C. Avoid freeze / thaw cycles. Buffer: PBS with 0.75% BSA,50% glycerol,pH7.3.
偶联物	Unconjugated
阳性对照	293T,HeLa,HT-1080
细胞定位	Membrane,Single-pass type I membrane protein
纯化	Affinity purification

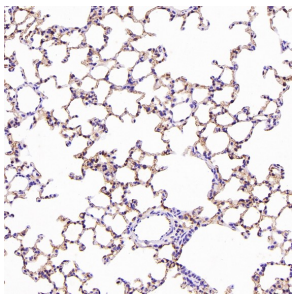
抗原信息

抗原信息	Recombinant fusion protein corresponding to Human Integrin alpha 2.
序列	MGPERTGAAPLPLLLVLALSQGILNCCLAYNVGLPEAKIFSGPSSEQFGYAVQQFINPKGNWLLVGSPWSGFPENRMGDV YKCPVDLSTATCEKLNQLTS

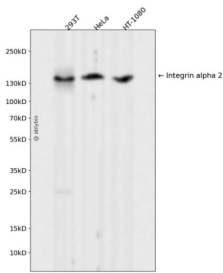
靶点信息

研究背景	This gene encodes the alpha subunit of a transmembrane receptor for collagens and related proteins. The encoded protein forms a heterodimer with a beta subunit and mediates the adhesion of platelets and other cell types to the extracellular matrix. Loss of the encoded protein is associated with bleeding disorder platelet-type 9. Antibodies against this protein are found in several immune disorders, including neonatal alloimmune thrombocytopenia. This gene is located adjacent to a related alpha subunit gene. Alternative splicing results in multiple transcript variants.
基因ID	3673
基因名	ITGA2
Swiss	P17301
别名	BR;CD49B;GPIa;HPA-5;VLA-2;VLAA2;ITGA2

产品验证



Immunohistochemical analysis of paraffin-embedded Rat liver, using the Antibody at 1:200 dilution.



Western blot analysis of Integrin alpha 2 expressed in 293T, HeLa, HT-1080 using Integrin alpha 2 Rabbit mAb at 1:1000. Secondary antibody: HRP Goat Anti-Rabbit IgG (H+L) at 1:5000. Lysates/proteins: 30ug per lane. Blocking buffer: 5% non-fat dry milk in TBST. Detection: ECL Enhanced Kit. Exposure time: 120s.

实验步骤

访问官网浏览详情: www.ablybio.cn