

Lactate Dehydrogenase C Rabbit mAb

货号: **AYM30327**

产品信息

反应	Human
宿主	Rabbit
克隆性	Monoclonal
预测反应	
应用	WB
推荐浓度	WB: 1:500 - 1:2000
理论分子量	36kDa
实测分子量	35kDa
形式	Liquid
保存条件	Store at -20°C. Avoid freeze / thaw cycles. Buffer: PBS with 0.75% BSA,50% glycerol,pH7.3.
偶联物	Unconjugated
阳性对照	293T,U-937
细胞定位	Cytoplasm
纯化	Affinity purification

抗原信息

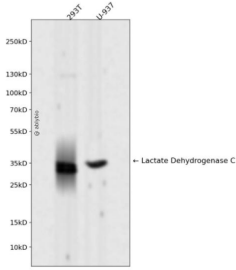
抗原信息	Recombinant fusion protein corresponding to Human Lactate Dehydrogenase C.
序列	MSTVKEQLIEKLIEDDENSQCKITIVGTGAVGMACAISILLKDLADELALVDVALDKLKGEMMDLQHGSLFFSTSKITSGKD YSVSANSRIVIVTAGARQ

靶点信息

研究背景	Lactate dehydrogenase C catalyzes the conversion of L-lactate and NAD to pyruvate and NADH in the final step of anaerobic glycolysis. LDHC is testis-specific and belongs to the lactate dehydrogenase family. Two transcript variants have been detected which differ in the 5' untranslated region.
基因ID	3948
基因名	LDHC

Swiss	P07864
别名	LDHC;CT32;LDH3;LDHX

产品验证



Western blot analysis of Lactate Dehydrogenase C expressed in 293T,U-937 using Lactate Dehydrogenase C Rabbit mAb at 1:1000. Secondary antibody: HRP Goat Anti-Rabbit IgG (H+L) at 1:5000. Lysates/proteins: 30ug per lane. Blocking buffer: 5% non-fat dry milk in TBST. Detection: ECL Enhanced Kit. Exposure time: 120s.

实验步骤

访问官网浏览详情: www.ablybio.cn