

CD146 Rabbit mAb

货号: **AYM30324**

产品信息

反应	Human,Mouse,Rat
宿主	Rabbit
克隆性	Monoclonal
预测反应	
应用	WB IHC IF/ICC IP FC
推荐浓度	WB: 1:500 - 1:2000 IHC: 1:50 - 1:200 IF/ICC: 1:50 - 1:200 IP: 1:20 - 1:50 FC: 1:20 - 1:50
理论分子量	57kDa/71kDa
实测分子量	72kDa
形式	Liquid
保存条件	Store at -20°C. Avoid freeze / thaw cycles. Buffer: PBS with 0.75% BSA,50% glycerol,pH7.3.
偶联物	Unconjugated
阳性对照	HeLa,A375,HUVEC,Mouse lung,Mouse uterus
细胞定位	Membrane,Single-pass type I membrane protein
纯化	Affinity purification

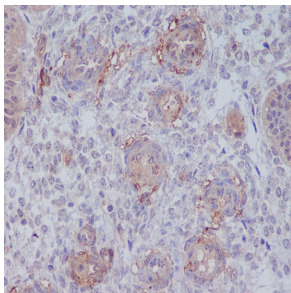
抗原信息

抗原信息	Recombinant fusion protein corresponding to Human CD146.
序列	VPGAEQPAPELVEVEVGSTALLKCGLSQSQGNLSHVDWFSVHKEKRTLIFRVRQGGQSQSEPGEYEQRLSLQDRGATLA LTQVTPQDERIFLCQGKRPRSQEYRIQLRVYKAPEEPNIQVNPGLGIPVNSKEPEEVATCVGRNGYPIQVIWYKNGRPLKEEK NRVHIQSSQTVESGLYTLQSILKAQLVKEDKDAQFYCELNYRLPSGNHMKESREVTVPVFPYPTKVVLEVEPVGMLKEG DRVEIRCLADGNPPPHFSISKQNPSTREAEETTNDNGVLVLEPARKEHSGRYECQGLDLDTMISLLSEPQELLVNYVSDVR VSPAAPERQEGSSLTLTCEAESSQDLEFQWLREETGQVLERGPVLQLHDLKREAGGGYRCVASVPSIPGLNRTQLVNVAIF GPPWMAFKERKVVVKENMVLNLSCEASGHPRPTISWNVNGTASEQDQDPQRVLSTLNLVLTPELLETGVECTASNDLGK NTSILFLELVNLTTLTPDSNTTGLSTSTASPHTRANSTSTERKLPEPESRG

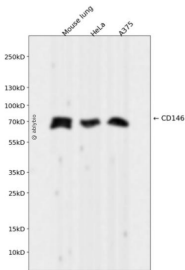
靶点信息

研究背景	Plays a role in cell adhesion, and in cohesion of the endothelial monolayer at intercellular junctions in vascular tissue. Its expression may allow melanoma cells to interact with cellular elements of the vascular system, thereby enhancing hematogeneous tumor spread. Could be an adhesion molecule active in neural crest cells during embryonic development. Acts as surface receptor that triggers tyrosine phosphorylation of FYN and PTK2/FAK1, and a transient increase in the intracellular calcium concentration.
基因ID	4162
基因名	MCAM
Swiss	P43121
别名	MCAM;CD146;MUC18

产品验证



Immunohistochemical analysis of paraffin-embedded human uterus, using CD146 Antibody.



Western blot analysis of CD146 expressed in Mouse lung, HeLa, A375 using CD146 Rabbit mAb at 1:1000. Secondary antibody: HRP Goat Anti-Rabbit IgG (H+L) at 1:5000. Lysates/proteins: 30ug per lane. Blocking buffer: 5% non-fat dry milk in TBST. Detection: ECL Enhanced Kit. Exposure time: 120s.

实验步骤

访问官网浏览详情: www.ablybio.cn