

Lgi1 Rabbit mAb

货号: **AYM30322**

产品信息

反应	Human,Mouse,Rat
宿主	Rabbit
克隆性	Monoclonal
预测反应	
应用	WB IHC IP
推荐浓度	WB: 1:500 - 1:2000 IHC: 1:50 - 1:200 IP: 1:20 - 1:50
理论分子量	33kDa/58kDa/63kDa
实测分子量	64kDa
形式	Liquid
保存条件	Store at -20°C. Avoid freeze / thaw cycles. Buffer: PBS with 0.75% BSA,50% glycerol,pH7.3.
偶联物	Unconjugated
阳性对照	U-87MG,HeLa,Mouse brain,Rat brain
细胞定位	Cell junction,Secreted,synapse
纯化	Affinity purification

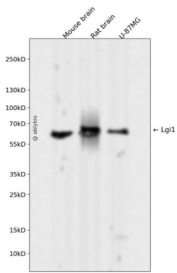
抗原信息

抗原信息	Recombinant fusion protein corresponding to Human Lgi1.
序列	QLFGGSHIYKRDSFANKFIKIQDIEILKIRKPNDIETFKIENNWFVVDSSKAGFTTIYKWNGNGFYSHQSLHAWYRDTDV EYLEIVRTPQTLRTPHLILSSSSQRPVIYQWNKATQLFTNQTDIPNMEVDYAVKHFSVKGDVYICLTRFIGDSKVMKWGGSS FQDIQRMPSRGSMVFQPLQINNYQYAILGSDYSFTQVYNWDAEKAKFVKFQELNVQAPRSFTHVSINKRNFLFASSFKGN TQIYKHVIVDLA

靶点信息

研究背景	This gene encodes a member of the secreted leucine-rich repeat (LRR) superfamily and shares homology with members of the SLIT protein family. The encoded protein may regulate the activity of voltage-gated potassium channels and may be involved in neuronal growth regulation and cell survival. This gene is rearranged as a result of translocations in glioblastoma cell lines, and it is frequently down-regulated or rearranged in malignant gliomas. Mutations in this gene result in autosomal dominant lateral temporal epilepsy. Alternative splicing results in multiple transcript variants.
基因ID	9211
基因名	LGI1
Swiss	O95970
别名	LGI1;ADLTE;ADPAEF;ADPEAF;EPITEMPIN;EPT;ETL1;IB1099

产品验证



Western blot analysis of Lgi1 expressed in Mouse brain, Rat brain, U-87MG using Lgi1 Rabbit mAb at 1:1000. Secondary antibody: HRP Goat Anti-Rabbit IgG (H+L) at 1:5000. Lysates/proteins: 30ug per lane. Blocking buffer: 5% non-fat dry milk in TBST. Detection: ECL Enhanced Kit. Exposure time: 120s.

实验步骤

访问官网浏览详情: www.ablybio.cn