

C1s Rabbit mAb

货号: **AYM30317**

产品信息

反应	Human
宿主	Rabbit
克隆性	Monoclonal
预测反应	
应用	WB IHC IP
推荐浓度	WB: 1:500 - 1:2000 IHC: 1:50 - 1:200 IP: 1:20 - 1:50
理论分子量	76kDa
实测分子量	90kDa
形式	Liquid
保存条件	Store at -20°C. Avoid freeze / thaw cycles. Buffer: PBS with 0.75% BSA,50% glycerol,pH7.3.
偶联物	Unconjugated
阳性对照	HepG2
细胞定位	blood microparticle,complement component C1 complex,extracellular region,extracellular space
纯化	Affinity purification

抗原信息

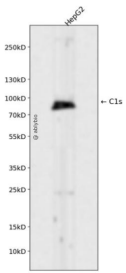
抗原信息	Recombinant fusion protein corresponding to Human C1s.
序列	GNREPTMYVGSTSVQTSRLAKSKMLTPEHVFIHPGWKLEVP EGR TNFDNDIALVRLKDPVKMGPTVSPICLPGTSSDYNLMDGDLGLISGWGRTEKRDRAVRLKAARLPVAPLRKCKEYKVEKPTADAEAYVFTPNMICAGGEKGMDSCKGDSGGAFAVQDPNDKTKFYAAGLVSWGPGQCGTYGLYTRVKNYVDWIMKTMQENSTPRED

靶点信息

研究背景	This gene encodes a serine protease, which is a major constituent of the human complement subcomponent C1. C1s associates with two other complement components C1r and C1q in order to yield the first component of the serum complement system. Defects in this gene are the cause of selective C1s deficiency.
------	--

基因ID	716
基因名	C1S
Swiss	P09871
别名	C1S;EDSPD2

产品验证



Western blot analysis of C1s expressed in HepG2 using C1s Rabbit mAb at 1:1000. Secondary antibody: HRP Goat Anti-Rabbit IgG (H+L) at 1:5000. Lysates/proteins: 30ug per lane. Blocking buffer: 5% non-fat dry milk in TBST. Detection: ECL Enhanced Kit. Exposure time: 120s.

实验步骤

访问官网浏览详情: www.ablybio.cn