

Cripto1 Rabbit mAb

货号: **AYM30314**

产品信息

反应	Human
宿主	Rabbit
克隆性	Monoclonal
预测反应	
应用	WB IF/ICC IP FC
推荐浓度	WB: 1:500 - 1:2000 IF/ICC: 1:50 - 1:200 IP: 1:20 - 1:50 FC: 1:20 - 1:50
理论分子量	21kDa
实测分子量	21kDa
形式	Liquid
保存条件	Store at -20°C. Avoid freeze / thaw cycles. Buffer: PBS with 0.75% BSA,50% glycerol,pH7.3.
偶联物	Unconjugated
阳性对照	NCCIT
细胞定位	Cell membrane,GPI-anchor,Lipid-anchor
纯化	Affinity purification

抗原信息

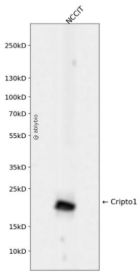
抗原信息	Recombinant fusion protein corresponding to Human Cripto1.
序列	LGHQEFARPSRGYLAFRDDSIWPQEPAIRPSSQRVPPMGIQHSKELNRTCCLNGGTCMLGSFCACPPSFYGRNCEHDV RKENCGSVPHDTWLPKKCSLCKCWHGQLRQFPQAFPLPGCD

靶点信息

研究背景	This gene encodes an epidermal growth factor-related protein that contains a cripto, FRL-1, and cryptic domain. The encoded protein is an extracellular, membrane-bound signaling protein that plays an essential role in embryonic development and tumor growth. Mutations in this gene are associated with forebrain defects. Pseudogenes of this gene are found on chromosomes 2, 3, 6, 8, 19 and X. Alternate splicing results in multiple transcript variants.
------	---

基因ID	6997
基因名	TDGF1
Swiss	P13385
别名	TDGF1;CR;CRGF;CRIPTO

产品验证



Western blot analysis of Cripto1 expressed in NCCIT using Cripto1 Rabbit mAb at 1:1000. Secondary antibody: HRP Goat Anti-Rabbit IgG (H+L) at 1:5000. Lysates/proteins: 30ug per lane. Blocking buffer: 5% non-fat dry milk in TBST. Detection: ECL Enhanced Kit. Exposure time: 120s.

实验步骤

访问官网浏览详情: www.ablybio.cn