

Lactate Dehydrogenase Rabbit mAb

货号: **AYM30313**

产品信息

反应	Human,Mouse,Rat
宿主	Rabbit
克隆性	Monoclonal
预测反应	
应用	WB IHC IF/ICC IP FC
推荐浓度	WB: 1:500 - 1:2000 IHC: 1:50 - 1:200 IF/ICC: 1:50 - 1:200 IP: 1:20 - 1:50 FC: 1:20 - 1:50
理论分子量	26kDa/30kDa/36kDa/39kDa
实测分子量	37kDa
形式	Liquid
保存条件	Store at -20°C. Avoid freeze / thaw cycles. Buffer: PBS with 0.75% BSA,50% glycerol,pH7.3.
偶联物	Unconjugated
阳性对照	HeLa,COS-7,HepG2,A-431,Mouse liver,Rat liver
细胞定位	Cytoplasm
纯化	Affinity purification

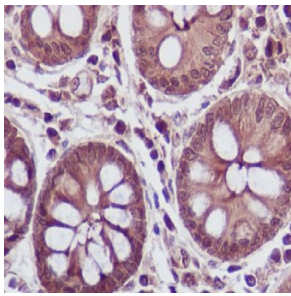
抗原信息

抗原信息	Recombinant fusion protein corresponding to Human Lactate Dehydrogenase.
序列	MATLKDQLIYNLLKKEEQTPQNKITVVGAVGMACAISILMKDLADELALVDVIEDKCLKGEMMDLQHGSLFLRTPKIVSGK DYNVTANSKLVITAGARQQEGESRLNLVQRNVNIFKFIIPNVVKYSPNCKLLIVSNPVDILTYVAWKISGFKNRVIGSGCNL DSARFRYLMGERLGVHPLSCHGWVLGEHGDSSVPVWSGMNVAGVSLKTLHPDLGTDKDKQWKEVHKQVVESAYEVI KLKGYTSWAIGLSVADLAESIMKNLRRVHPVSTMIKGLYGIKDDVFLSVPICILGQNGISDLVKVTLTSEEEARLKKSADTLW GIQKELQF

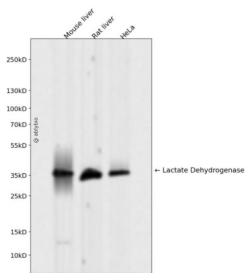
靶点信息

研究背景	The protein encoded by this gene catalyzes the conversion of L-lactate and NAD to pyruvate and NADH in the final step of anaerobic glycolysis. The protein is found predominantly in muscle tissue and belongs to the lactate dehydrogenase family. Mutations in this gene have been linked to exertional myoglobinuria. Multiple transcript variants encoding different isoforms have been found for this gene. The human genome contains several non-transcribed pseudogenes of this gene.
基因ID	3939
基因名	LDHA
Swiss	P00338
别名	GSD11;HEL-S-133P;LDHM;PIG19;LDHA

产品验证



Immunohistochemical analysis of paraffin-embedded human colon, using Lactate Dehydrogenase Antibody.



Western blot analysis of Lactate Dehydrogenase expressed in Mouse liver, Rat liver, HeLa using Lactate Dehydrogenase Rabbit mAb at 1:1000. Secondary antibody: HRP Goat Anti-Rabbit IgG (H+L) at 1:5000. Lysates/proteins: 30ug per lane. Blocking buffer: 5% non-fat dry milk in TBST. Detection: ECL Enhanced Kit. Exposure time: 120s.

实验步骤

访问官网浏览详情: www.ablybio.cn