

# mGluR1 Rabbit mAb

货号: **AYM30308**

## 产品信息

反应	Human,Mouse,Rat
宿主	Rabbit
克隆性	Monoclonal
预测反应	
应用	WB
推荐浓度	<b>WB:</b> 1:500 - 1:2000
理论分子量	101kDa/132kDa
实测分子量	101kDa
形式	Liquid
保存条件	Store at -20°C. Avoid freeze / thaw cycles. Buffer: PBS with 0.75% BSA,50% glycerol,pH7.3.
偶联物	Unconjugated
阳性对照	HL-60,MCF7,Mouse brain,Rat brain
细胞定位	Cell membrane,Multi-pass membrane protein
纯化	Affinity purification

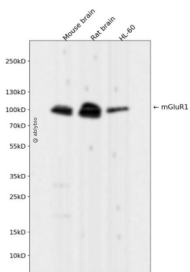
## 抗原信息

抗原信息	Recombinant fusion protein corresponding to Human mGluR1.
序列	NETACNQTAVIKPLTKSYQGSGKSLTFSDTSTKTLYNVEEEEDAQPIRFSPGSPSMVVHRRVPSAATTPPLPSHLTAEETPL FLAEPALPKGLPPPLQQQQPPPQKSLMDQLQGVVSNFSTAIPDFHAVLAGPGGPGNGLRSLYPPPPPHLQMLPLQL STFGHEELVSPADDDDDSERFKLLQEYVYEHEREGNTTEDELEEEEDLQAASKLTPD

## 靶点信息

研究背景	This gene encodes a metabotropic glutamate receptor that functions by activating phospholipase C. L-glutamate is the major excitatory neurotransmitter in the central nervous system and activates both ionotropic and metabotropic glutamate receptors. Glutamatergic neurotransmission is involved in most aspects of normal brain function and can be perturbed in many neuropathologic conditions. The canonical alpha isoform of the encoded protein is a disulfide-linked homodimer whose activity is mediated by a G-protein-coupled phosphatidylinositol-calcium second messenger system. This gene may be associated with many disease states, including schizophrenia, bipolar disorder, depression, and breast cancer. Alternative splicing results in multiple transcript variants encoding different isoforms.
基因ID	2911
基因名	GRM1
Swiss	Q13255
别名	GRM1;GPRC1A;MGLU1;MGLUR1;PPP1R85;SCAR13

## 产品验证



Western blot analysis of mGluR1 expressed in Mouse brain, Rat brain, HL-60 using mGluR1 Rabbit mAb at 1:1000. Secondary antibody: HRP Goat Anti-Rabbit IgG (H+L) at 1:5000. Lysates/proteins: 30ug per lane. Blocking buffer: 5% non-fat dry milk in TBST. Detection: ECL Enhanced Kit. Exposure time: 120s.

## 实验步骤

访问官网浏览详情: [www.ablybio.cn](http://www.ablybio.cn)