

PP2A alpha + beta Rabbit mAb

货号: **AYM30305**

产品信息

反应	Human,Mouse,Rat
宿主	Rabbit
克隆性	Monoclonal
预测反应	
应用	WB IHC ICC IP
推荐浓度	WB: 1:500 - 1:2000 IHC: 1:50 - 1:200 ICC: 1:50 - 1:200 IP: 1:20 - 1:50
理论分子量	36kDa
实测分子量	36kDa
形式	Liquid
保存条件	Store at -20°C. Avoid freeze / thaw cycles. Buffer: PBS with 0.75% BSA,50% glycerol,pH7.3.
偶联物	Unconjugated
阳性对照	HeLa,293T,NIH/3T3,Jurkat,C6,Mouse testis,Mouse brain,Rat lung,Rat testis
细胞定位	cytosol,nucleus,spindle pole
纯化	Affinity purification

抗原信息

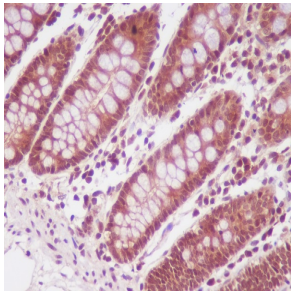
抗原信息	Recombinant fusion protein corresponding to Human PP2A alpha + beta.
序列	WSDPDDRGGWGISPRGAGYTFGQDISETFNHANGLTLVSRHQQLVMEGYNWCHDRNVVTIFSAPNYCYRCGNQAAIME LDDTLKYSFLQFDPAPRRGEPHVTRRTPDYFL

靶点信息

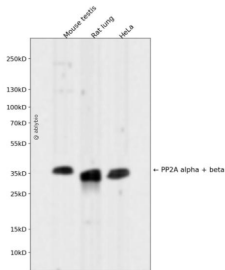
研究背景	This gene encodes the phosphatase 2A catalytic subunit. Protein phosphatase 2A is one of the four major Ser/Thr phosphatases, and it is implicated in the negative control of cell growth and division. It consists of a common heteromeric core enzyme, which is composed of a catalytic subunit and a constant regulatory subunit, that associates with a variety of regulatory subunits. This gene encodes a beta isoform of the catalytic subunit. [provided by RefSeq, Mar 2010]
------	---

基因ID	5516,5515
基因名	PPP2CB,PPP2CA
Swiss	P62714/P67775
别名	PP2Abeta; PP2CB

产品验证



Immunohistochemical analysis of paraffin-embedded human colon, using PP2A alpha + beta Antibody.



Western blot analysis of PP2A alpha + beta expressed in Mouse testis, Rat lung, HeLa using PP2A alpha + beta Rabbit mAb at 1:1000. Secondary antibody: HRP Goat Anti-Rabbit IgG (H+L) at 1:5000. Lysates/proteins: 30ug per lane. Blocking buffer: 5% non-fat dry milk in TBST. Detection: ECL Enhanced Kit. Exposure time: 120s.

实验步骤

访问官网浏览详情: www.ablybio.cn