

# Sodium Potassium ATPase Rabbit mAb

货号: **AYM30303**

## 产品信息

反应	Human,Mouse,Rat
宿主	Rabbit
克隆性	Monoclonal
预测反应	
应用	WB IHC IF/ICC FC
推荐浓度	<b>WB:</b> 1:500 - 1:2000 <b>IHC:</b> 1:50 - 1:200 <b>IF/ICC:</b> 1:50 - 1:200 <b>FC:</b> 1:20 - 1:50
理论分子量	74kDa/109kDa/112kDa/113kDa
实测分子量	100kDa
形式	Liquid
保存条件	Store at -20°C. Avoid freeze / thaw cycles. Buffer: PBS with 0.75% BSA,50% glycerol,pH7.3.
偶联物	Unconjugated
阳性对照	THP-1,Mouse liver
细胞定位	Cell membrane,Melanosome,Multi-pass membrane protein
纯化	Affinity purification

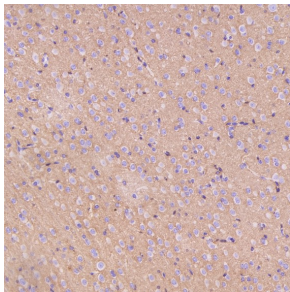
## 抗原信息

抗原信息	Recombinant fusion protein corresponding to Human Sodium Potassium ATPase .
序列	RVLGFCHLFLPDEQFPEGFQFDTDVNFIPIDNLCFVGLISMIDPPRAAVPDAVVGKCRSAGIKVIMVTGDHPITAKAIKGVG IISEGNETVEDIAARLNIPVSQVNPDRDAKACVVHGSDLKDMTSEQLDDILKYHTEIVFARTSPQQKLIIVEGCQRQGAIVAVT GDGVNDSPALKKADIGVAMGIAGSDVSKQAADMILLDDNFASIVTGVEEGRIFDNLKKSIAYTLTSNIPEITPFLIFIANIPLP LGTVTILCIDLGTDMVPAISLAYEQAESDIMKRQPRNPKTDKLVNERLI

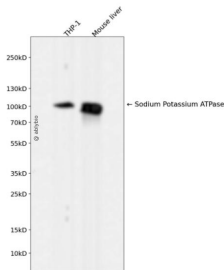
## 靶点信息

研究背景	The protein encoded by this gene belongs to the family of P-type cation transport ATPases, and to the sub family of Na <sup>+</sup> /K <sup>+</sup> -ATPases. Na <sup>+</sup> /K <sup>+</sup> -ATPase is an integral membrane protein responsible for establishing and maintaining the electrochemical gradients of Na and K ions across the plasma membrane. These gradients are essential for osmoregulation, for sodium-coupled transport of a variety of organic and inorganic molecules, and for electrical excitability of nerve and muscle. This enzyme is composed of two subunits, a large catalytic subunit (alpha) and a smaller glycoprotein subunit (beta). The catalytic subunit of Na <sup>+</sup> /K <sup>+</sup> -ATPase is encoded by multiple genes. This gene encodes an alpha 1 subunit. Multiple transcript variants encoding different isoforms have been found for this gene.
基因ID	476
基因名	ATP1A1
Swiss	P05023
别名	ATP1A1;ATPase Na <sup>+</sup> /K <sup>+</sup> transporting subunit alpha 1;ATP1A;CMT2DD;HOMGSMR2

## 产品验证



Immunohistochemical analysis of paraffin-embedded Rat cerebral cortex, using the Antibody at 1:100 dilution.



Western blot analysis of Sodium Potassium ATPase expressed in THP-1, Mouse liver using Sodium Potassium ATPase Rabbit mAb at 1:1000. Secondary antibody: HRP Goat Anti-Rabbit IgG (H+L) at 1:5000. Lysates/proteins: 30ug per lane. Blocking buffer: 5% non-fat dry milk in TBST. Detection: ECL Enhanced Kit. Exposure time: 120s.

## 实验步骤

访问官网浏览详情: [www.ablybio.cn](http://www.ablybio.cn)