

# SorLA Rabbit mAb

货号: **AYM30302**

## 产品信息

反应	Human,Mouse,Rat
宿主	Rabbit
克隆性	Monoclonal
预测反应	
应用	WB IHC
推荐浓度	<b>WB:</b> 1:500 - 1:2000 <b>IHC:</b> 1:50 - 1:200
理论分子量	248kDa
实测分子量	248kDa
形式	Liquid
保存条件	Store at -20°C. Avoid freeze / thaw cycles. Buffer: PBS with 0.75% BSA,50% glycerol,pH7.3.
偶联物	Unconjugated
阳性对照	SH-SY5Y
细胞定位	Endosome,Golgi apparatus,Membrane,Secreted,Single-pass type I membrane protein
纯化	Affinity purification

## 抗原信息

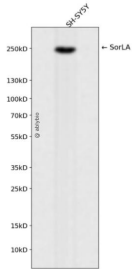
抗原信息	Recombinant fusion protein corresponding to Human SorLA.
序列	DSAMNITAYLGNTTDNFFKISNLKMGHNYFTVQARCLFGNQICGEPAILLYDELGSGADASATQAARSTDVAAVVVPILFL ILLSLGVGFAILYTKHRRRLQSSFTAFANSHYSSRLGSAIFSSGDDLGEDDEDAPMITGFSDDVPMVIA

## 靶点信息

研究背景	This gene encodes a mosaic protein that belongs to at least two families: the vacuolar protein sorting 10 (VPS10) domain-containing receptor family, and the low density lipoprotein receptor (LDLR) family. The encoded protein also contains fibronectin type III repeats and an epidermal growth factor repeat. The encoded preproprotein is proteolytically processed to generate the mature receptor, which likely plays roles in endocytosis and sorting. Mutations in this gene may be associated with Alzheimer's disease.
基因ID	6653

基因名	SORL1
Swiss	Q92673
别名	SORL1;C11orf32;LR11;LRP9;SORLA;SorLA-1;gp250

## 产品验证



Western blot analysis of SorLA expressed in SH-SY5Y using SorLA Rabbit mAb at 1:1000. Secondary antibody: HRP Goat Anti-Rabbit IgG (H+L) at 1:5000. Lysates/proteins: 30ug per lane. Blocking buffer: 5% non-fat dry milk in TBST. Detection: ECL Enhanced Kit. Exposure time: 120s.

## 实验步骤

访问官网浏览详情: [www.ablybio.cn](http://www.ablybio.cn)