

# ENT2 Rabbit mAb

货号: **AYM30284**

## 产品信息

反应	Human,Mouse,Rat
宿主	Rabbit
克隆性	Monoclonal
预测反应	
应用	WB IHC IF/ICC FC
推荐浓度	<b>WB:</b> 1:500 - 1:2000 <b>IHC:</b> 1:50 - 1:200 <b>IF/ICC:</b> 1:50 - 1:200 <b>FC:</b> 1:20 - 1:50
理论分子量	55-65kDa
实测分子量	55-65kDa
形式	Liquid
保存条件	Store at -20°C. Avoid freeze / thaw cycles. Buffer: PBS with 0.75% BSA,50% glycerol,pH7.3.
偶联物	Unconjugated
阳性对照	
细胞定位	basolateral plasma membrane,nuclear membrane,nucleolus,plasma membrane
纯化	Affinity purification

## 抗原信息

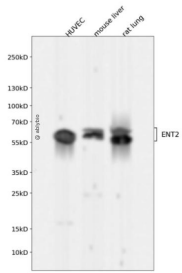
抗原信息	Recombinant fusion protein corresponding to Human ENT2.
序列	MARGDAPRDSYHLVGISFFILGLGTLWPWNFFITAIPYFQARLAGAGNSTARILSTNHTGPEDAFNFWVTLTLLQLPLLLFTLLNSFLYQCVPEVTRIL

## 靶点信息

研究背景	The uptake of nucleosides by transporters, such as SLC29A2, is essential for nucleotide synthesis by salvage pathways in cells that lack de novo biosynthetic pathways. Nucleoside transport also plays a key role in the regulation of many physiologic processes through its effect on adenosine concentration at the cell surface (Griffiths et al., 1997 [PubMed 9396714]).[supplied by OMIM, Nov 2008]
------	---

基因ID	3177
基因名	SLC29A2
Swiss	Q14542
别名	DER12; ENT2; HNP36

## 产品验证



Western blot analysis of ENT2 expressed in HUVEC, mouse liver, rat lung using ENT2 Rabbit mAb at 1:1000. Secondary antibody: HRP Goat Anti-Rabbit IgG (H+L) at 1:5000. Lysates/proteins: 30ug per lane. Blocking buffer: 5% non-fat dry milk in TBST. Detection: ECL Enhanced Kit. Exposure time: 120s.

## 实验步骤

访问官网浏览详情: [www.ablybio.cn](http://www.ablybio.cn)